



Pre-Trip Inspection and Driving Performance Evaluation



MANIPULATIVE SKILLS ASSESSMENT

- PRE-TRIP INSPECTION
- COMMERCIAL ROAD TEST CRITERIA



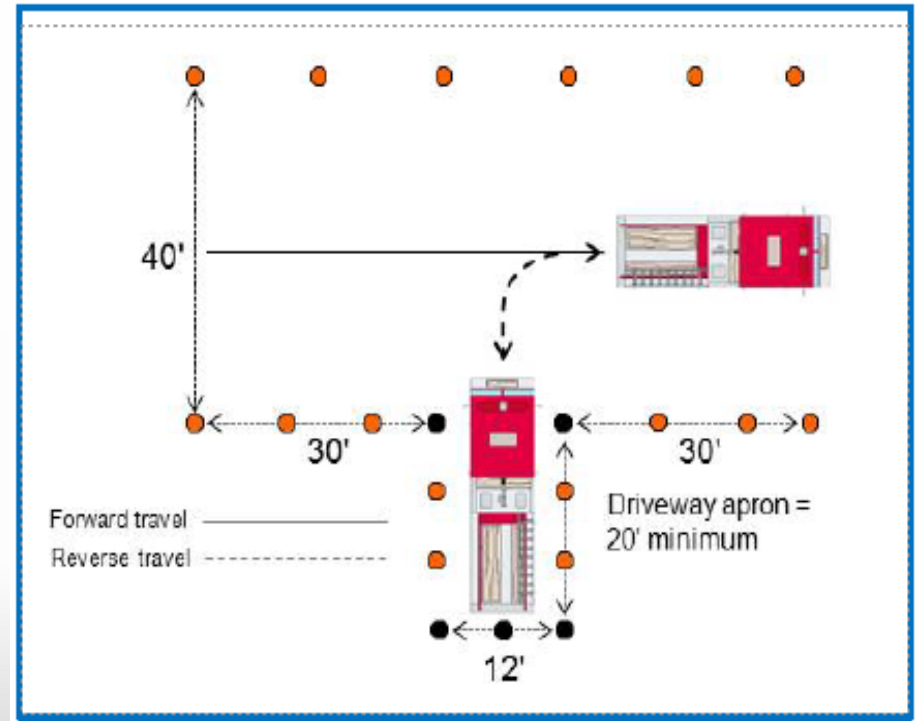
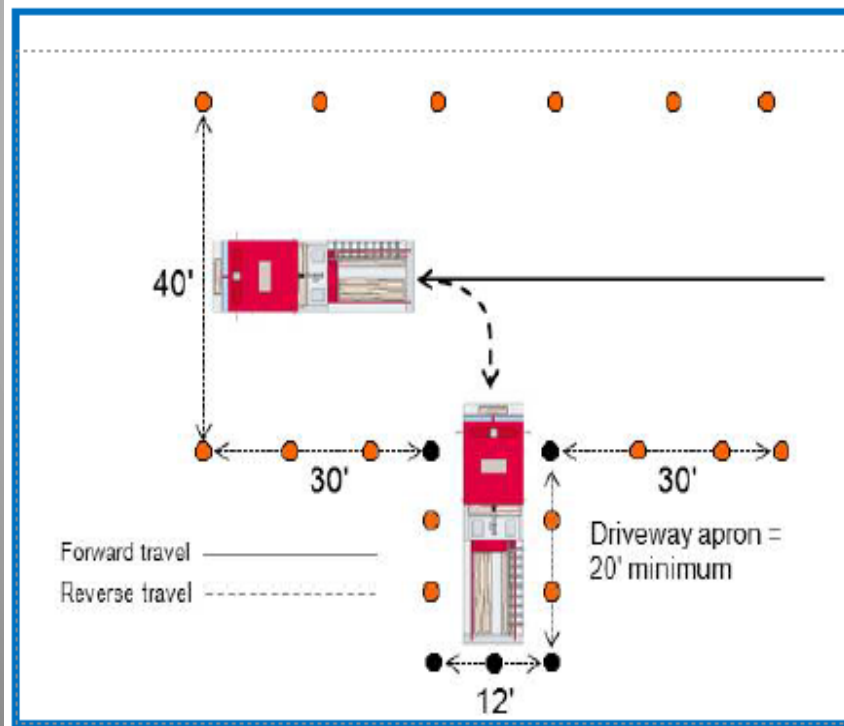
S D F D

PRE TRIP INSPECTION



SDFD Skills You will be tested on

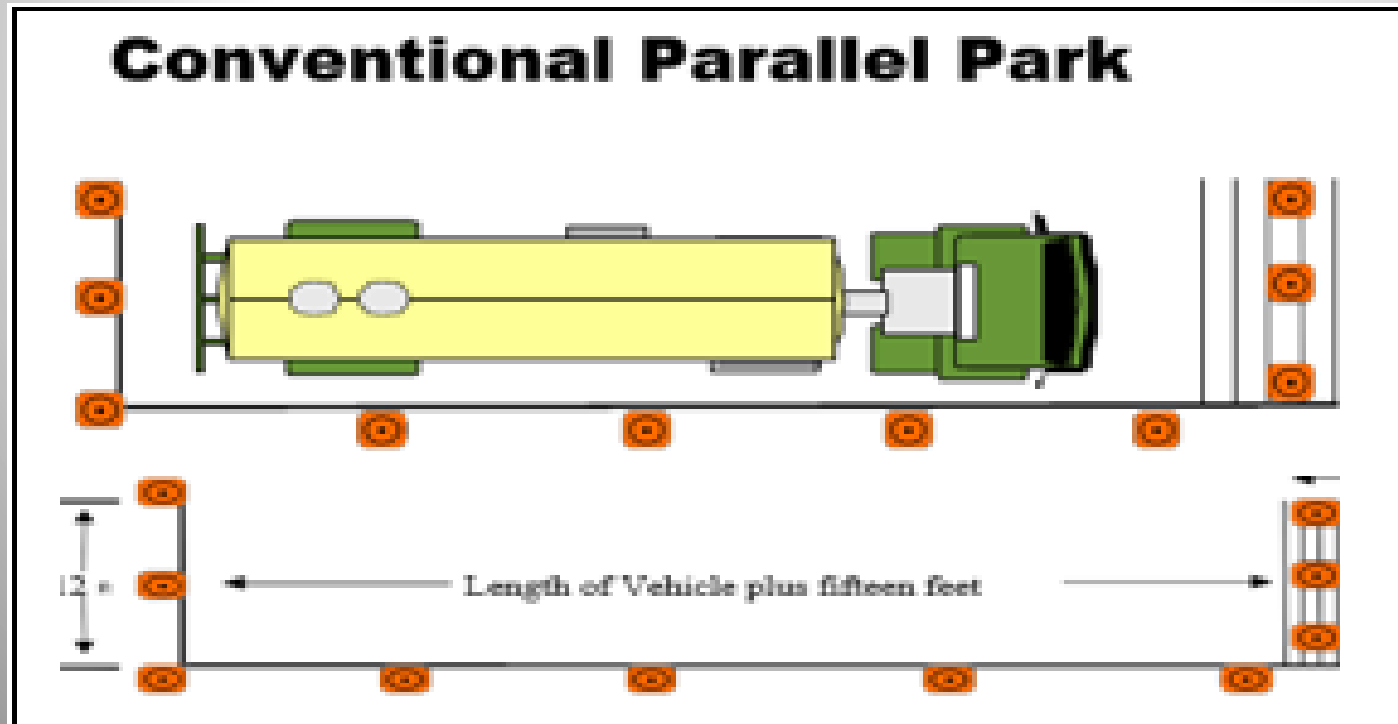
1. Alley dock (left & right)





SDFD Skills You will be tested on

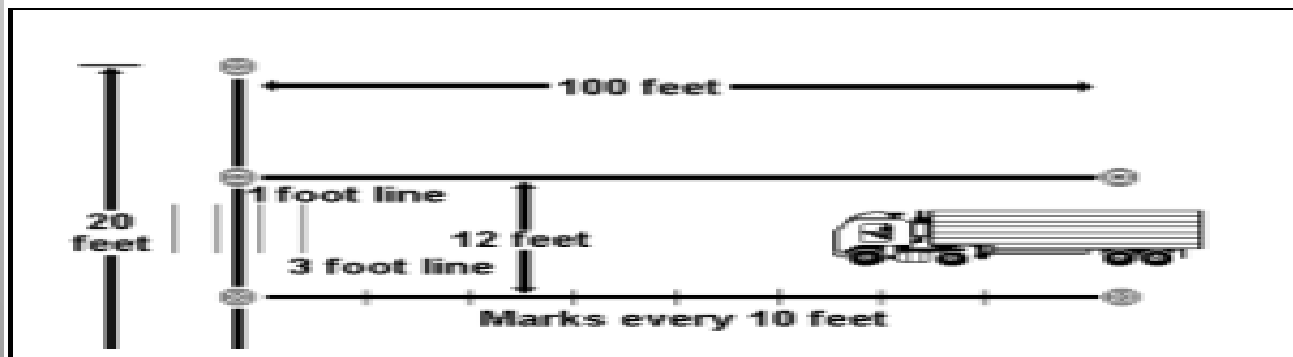
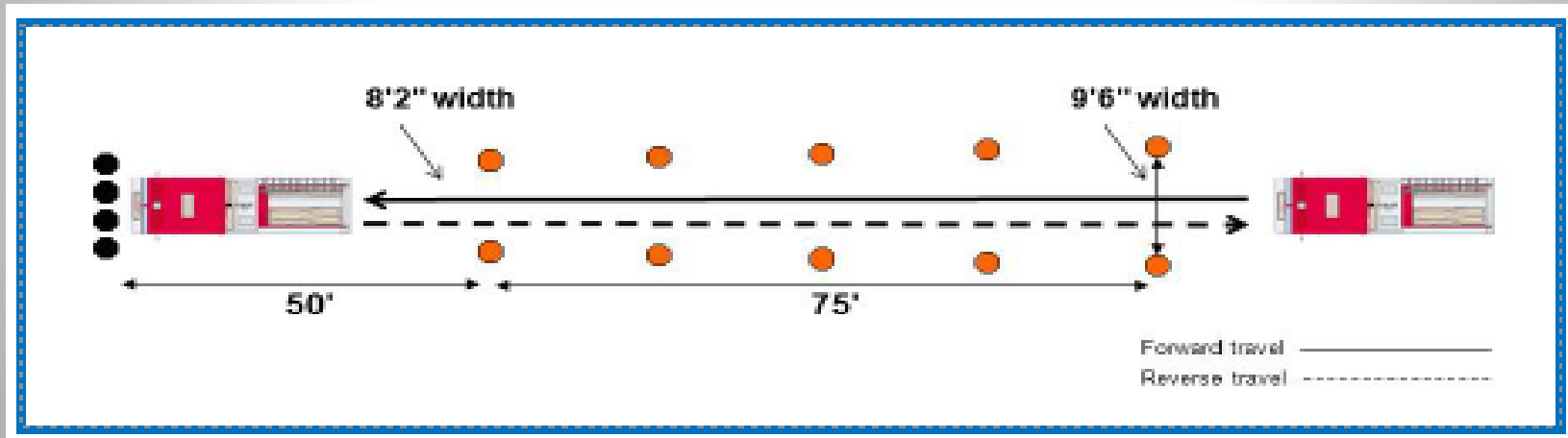
2. Parallel park





SDFD Skills You will be tested on

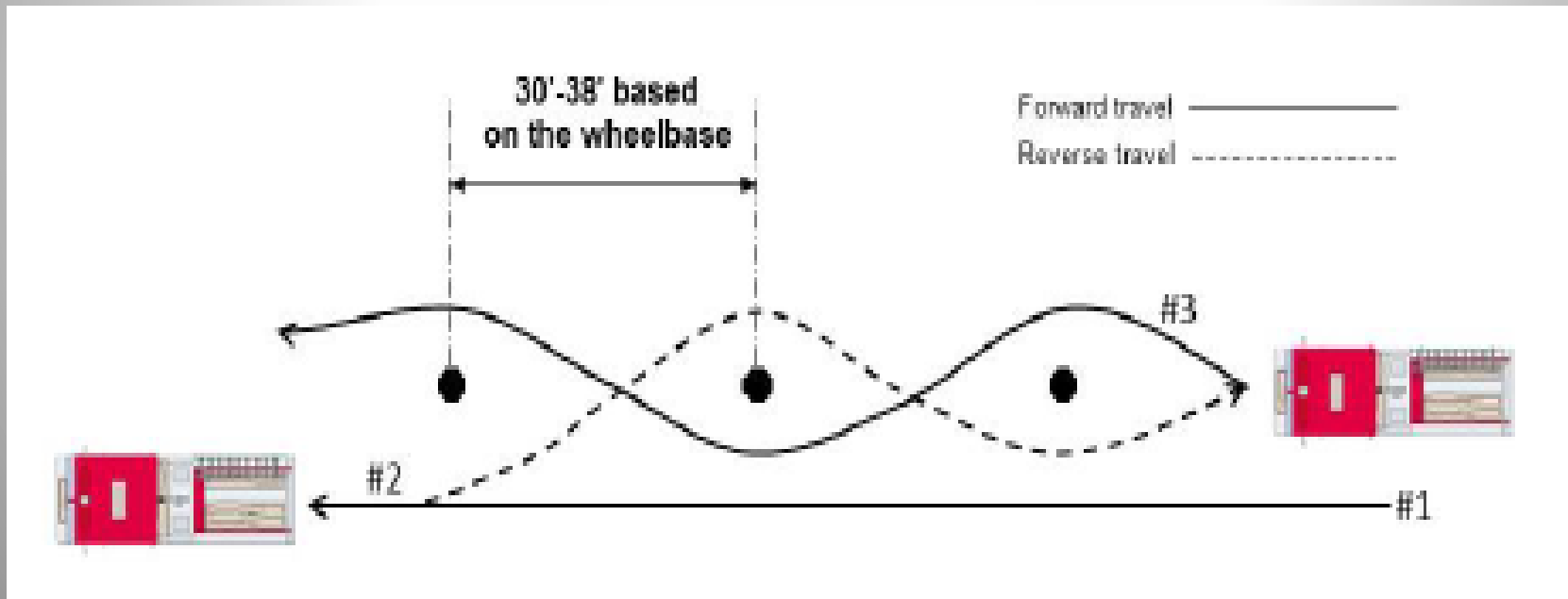
3. Diminishing Clearance Forward Stop.





SDFD Skills You will be tested on

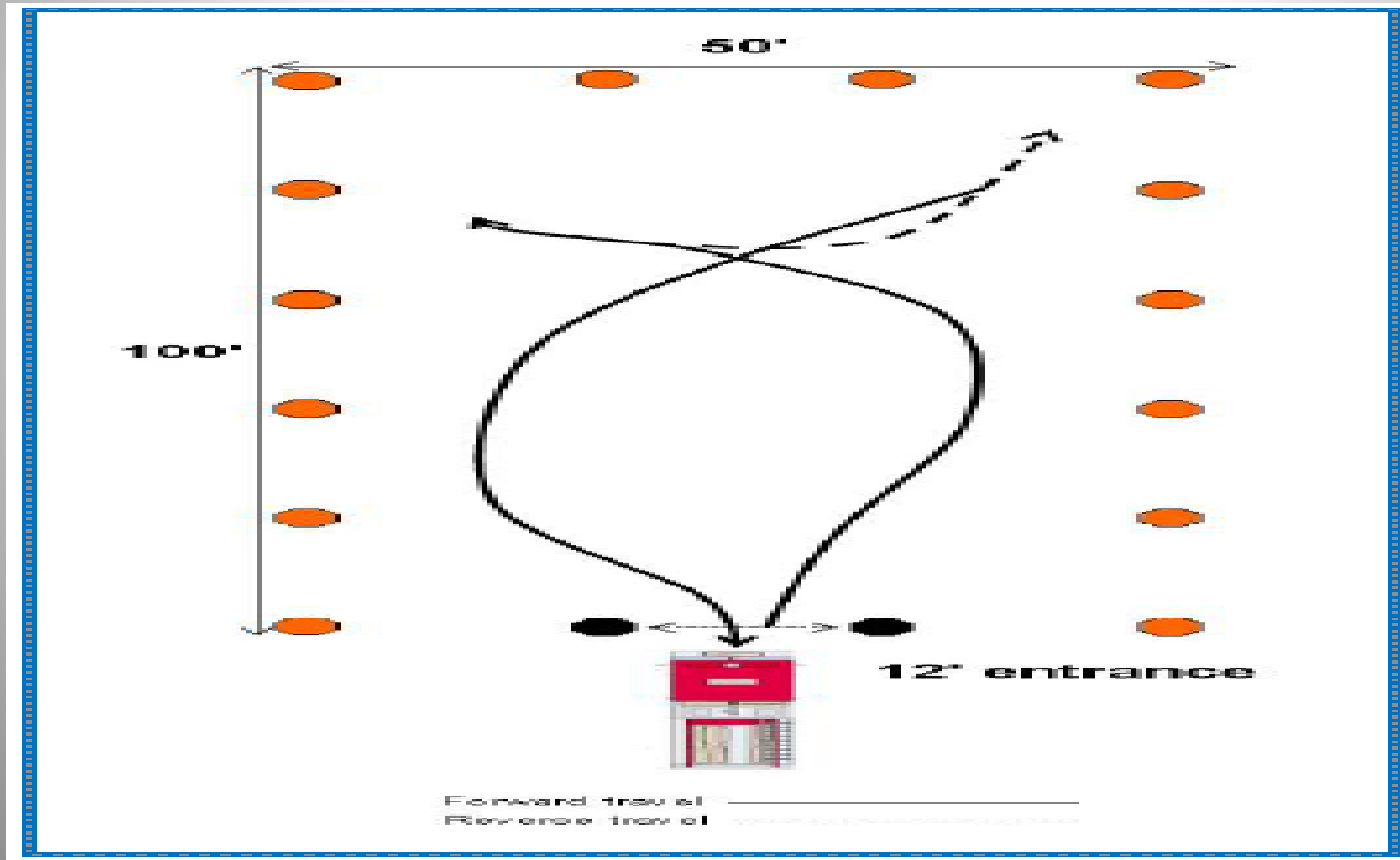
4. Serpentine





SDFD Skills You will be tested on

5. Confined Space Turnaround

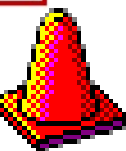


**For your Drive
Test refer to this
SDFD Guide
along with the:
California Driver
Handbook and
Commercial
Driver Handbook**



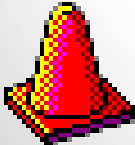
**Commercial Drive Test
Pre/Post Apparatus
Inspection Guide**

Rev. 5-5-22





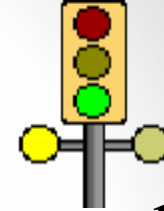
Critical Driving Errors

<p>Intervention by Examiner</p>	<p>Any driver action or inaction requiring physical or verbal intervention by the Examiner.</p>
<p>Strikes object / curb</p> 	<ul style="list-style-type: none">• Makes contact with another vehicle, object, pedestrian, or animal when it could have been avoided.• Drives over the curb or on the sidewalk.



Critical Driving Errors

Disobeys traffic sign, signal, law



Disobeys traffic safety personnel or safety vehicles

Dangerous maneuver

Speed

Lane violation





Drive!

Pump!

Practice!



Pre-Trip Inspection



Driver Operator Testing Program



Front of Vehicle

- Overall look at the entire vehicle





Front of Vehicle

- Look under the vehicle for leaking fluids





Front of Vehicle Lights/Reflectors

Clearance Lights

- Clean
- Securely mounted
- Not broken
- Amber to the front





Front of Vehicle Lights/Reflectors

Headlights

Turn Signals

- Clean
- Securely mounted
- Not broken





Front of Vehicle Lights/Reflectors

Reflectors

- Clean
- Securely mounted
- Not broken
- Amber to the front





Front of Vehicle Wipers/Windshield

Windshield

- Clean
- No illegal stickers
- No obstructions
- No damage to the glass or seal





Front of Vehicle Wipers/Windshield

Wiper Arm and Blades

- Securely mounted
- Not damaged
- Operate smoothly



Note: Do not operate on a dry windshield



Front of Vehicle Steering Box/Hoses

Steering Box

- Securely mounted
- Not cracked
- Not leaking





Front of Vehicle Steering Box/Hoses

Hoses/Couplings

- No leaks
- Not damaged
- Securely mounted





Front of Vehicle Steering Box/Hoses

Steering Linkage

- Connecting links, arms, and rods are not worn or cracked
- Securely mounted





Front Suspension Springs/Air

Leaf Springs

- Look for missing, shifted, cracked, or broken leaf springs





Front Suspension Spring Mounts

Spring Mounts

- Look for cracked or damaged spring hangers, bushings, U-bolts, or other axle mounting parts





Front Suspension Shock Absorbers

Shock Absorbers

- Properly secured
- No leaks
- U-bolts

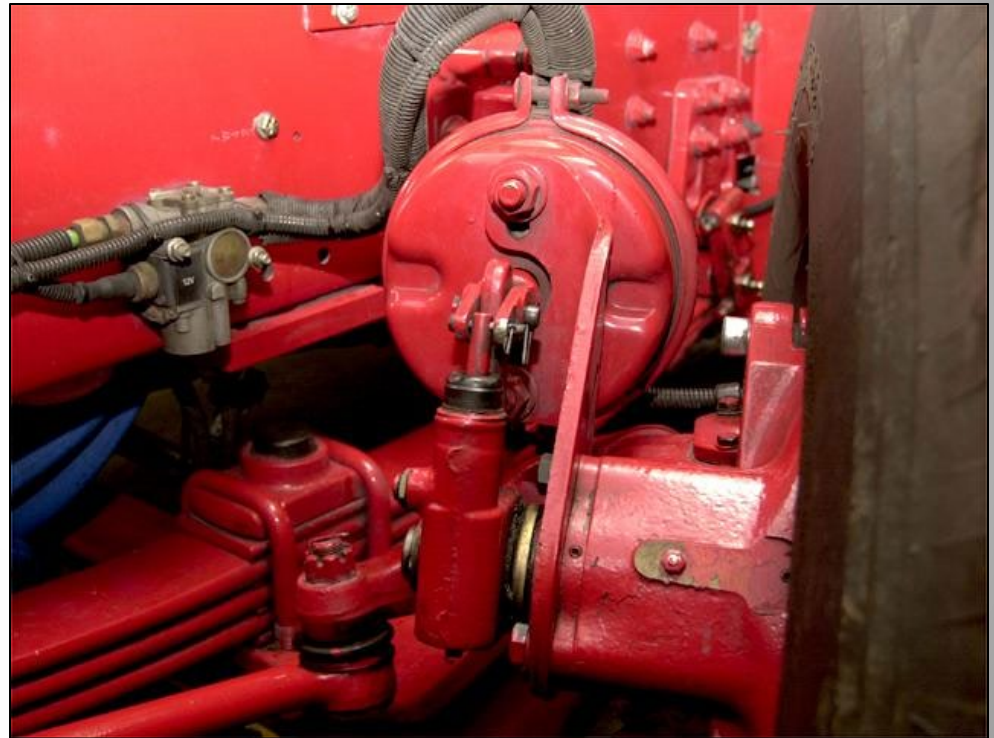




Front Brake Slack Adjustor

Slack Adjustor

- No broken, loose, or missing parts
- On most SDFD apparatus, the push rod should not have more than two inches of travel
- The max travel depends on the can size



Type	Diameter	Max Travel
20	6 25/32	1 3/4
24	7 7/32	1 3/4
30	8 3/32	2



Front Brake Brake Chamber

Brake Chamber

- Not leaking, cracked, or dented
- Securely mounted





Front Brake Brake Chamber

Brake Chamber

- Not leaking, cracked, or dented
- Securely mounted





Front Brake Brake Hoses/Lines

Brake Hoses/Lines

- Look for cracked, worn, or leaking hoses, lines, and couplings





Front Brake Drum Brake/Linings

Rotors/Drums

- No cracks or dents
- No loose or missing bolts

Pads

- Not dangerously thin,
¼-inch minimum
thickness for drum
brakes





Front Wheels Rims

Rims

- Not bent
- No cracks or damage to rims
- No weld repairs





Front Wheels Hub Grease Seals

Hub Grease Seal

- Not leaking





Front Wheels Tires

Tires

(CID)

- C - Condition
- I - Inflation
- D - Depth





Front Wheels Tires

Condition

- Check tread for even wear
- Check tread and sidewall for cuts or damage





Front Wheels Tires

Inflation

- Check inflation
- Check valve stem and cap





Front Wheels Tires

Depth

- Minimum tread depth of 4/32 on steering axles





Front Wheels Lug Nuts

Lug Nuts/Wheel Fasteners

- All are present
- No cracks
- No signs of looseness
- Bolt holes are not cracked





Driver Exterior Area Door, Mirror

Door

- Not damaged
- Open, close, and latch properly
- Hinges and seals are intact





Driver Exterior Area Door, Mirror

Mirror

- Clean, clear, not cracked
- Bracket is securely attached

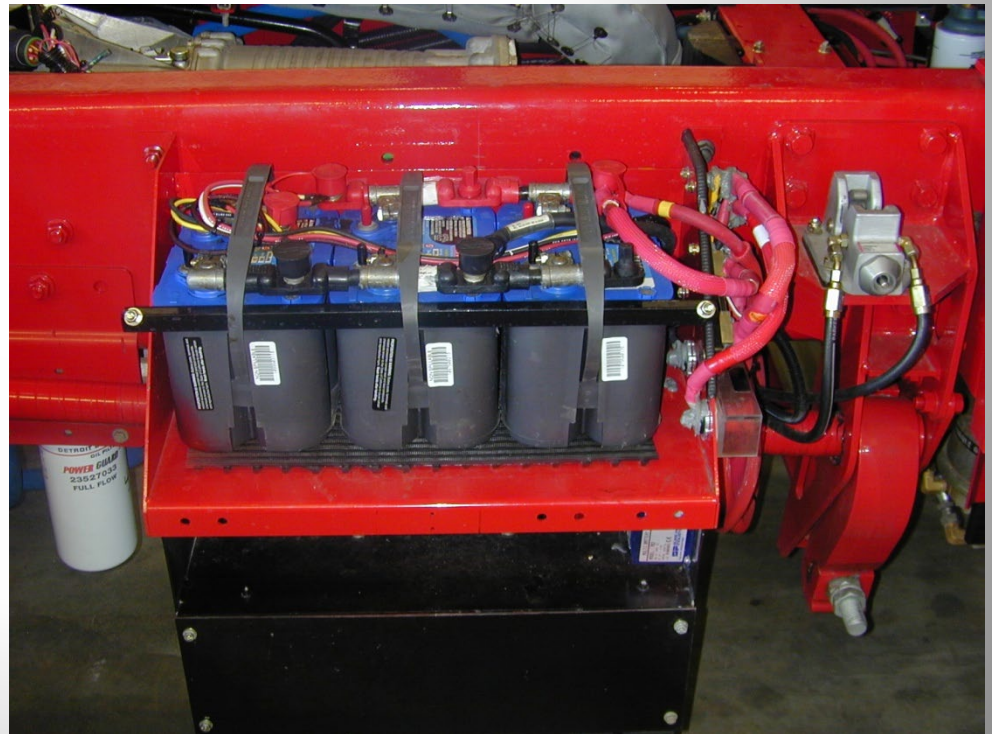




Driver Exterior Area Battery/Box

Battery

- Securely mounted
- All cell caps are present (if equipped)
- Connections are tight
- No excessive corrosion





Driver Exterior Area Battery/Box

Battery Box

- Cover and door are secure and latched





Side of Vehicle Fuel Tank

Fuel Cap

- Securely attached
- Vent





Under Vehicle Drive Shaft

Drive Shaft

- Not cracked
- Not bent
- Couplings securely mounted and free of foreign objects

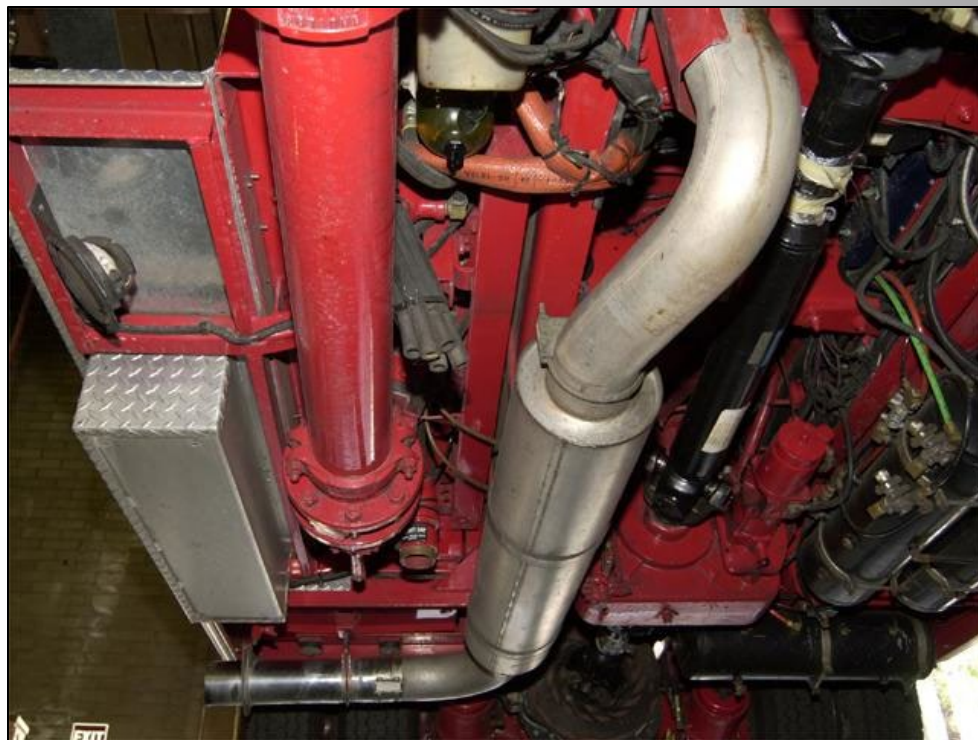




Under Vehicle Exhaust System

Exhaust System

- Check for damage and leaks indicated by carbon or rust
- Securely mounted





Under Vehicle Frame

Frame

- No cracks, broken welds, or damage to the longitudinal frame members, cross members, box, or floor





Rear Suspension Springs/Air

Leaf Springs

- Look for missing, shifted, cracked, or broken leaf springs





Rear Suspension Spring Mounts

Spring Mounts

- Look for cracked or damaged spring hangers, bushings, U-bolts, or other axle mounting parts





Rear Suspension Shock Absorbers

Shock Absorbers

- Properly secured
- No leaks



Note: State if your vehicle does not have rear shock absorbers



Rear Brake Brake Chamber

Brake Chamber

- Not leaking, cracked, or dented
- Securely mounted





Rear Brake Brake Chamber

Brake Chamber

- Not leaking, cracked, or dented
- Securely mounted





Rear Brake Brake Hoses/Lines

Brake Hoses/Lines

- Look for cracked, worn, or leaking hoses, lines, and couplings





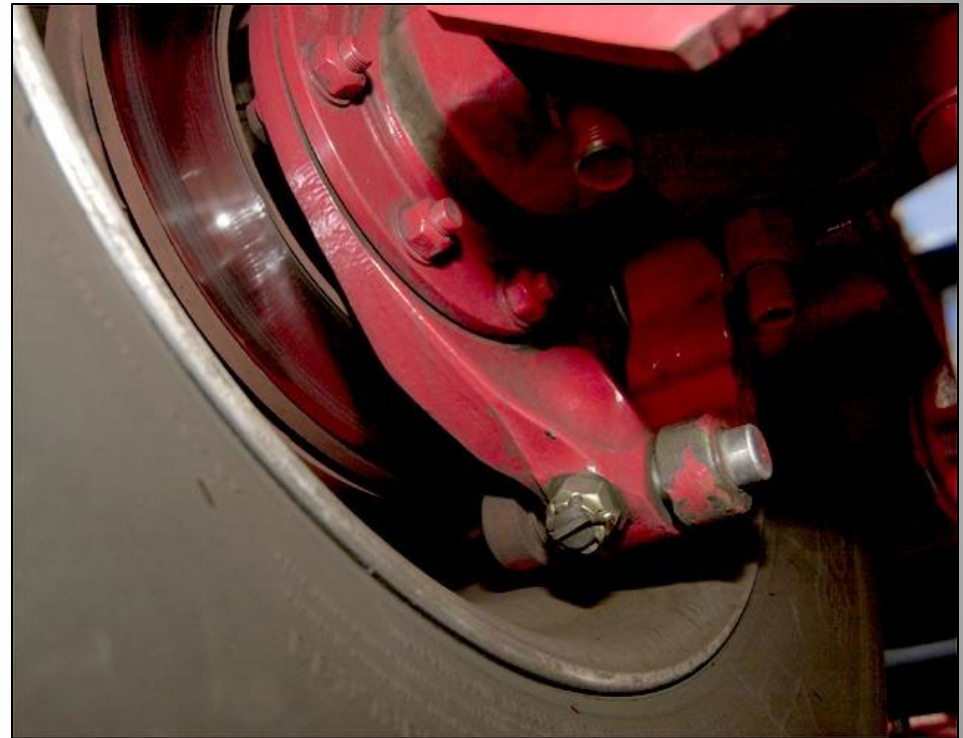
Rear Brake Drum Brake/Linings

Rotors/Drums

- No cracks or dents
- No loose or missing bolts

Pads

- Not dangerously thin;
¼-inch minimum
thickness.





Rear Wheels Axle Seals

Axle Seal

- Not leaking
- If axle has sight glass, check oil level





Rear Wheels Tires

Depth

- Minimum tread depth of 2/32 on non-steering axles





Rear Wheels Spacers

Spacing

- Nothing between tires
- Tires are not touching
- Space is even





Rear of Vehicle Emergency Equipment

Spare Electrical Fuses

Note: If vehicle has circuit breakers (not needing fuses), this must be stated

3 Reflective Triangles



Note: SDFD substitutes traffic cones for triangles



Rear of Vehicle Lights/Reflectors

Brake Lights

Turn Signals

Clearance Lights

- Clean
- Secured
- Not broken





Rear of Vehicle Lights/Reflectors

Reflectors

- Clean
- Secured
- Not broken
- Red to the rear





Rear of Vehicle Doors

Compartment Doors

- Open, close, and latch properly





Rear of Vehicle Splash Guards

Mud Flaps

- Not damaged
- Securely mounted





Rear of Vehicle Fuel Tank

Fuel Tank

- No leaks
- No damage
- Securely mounted
- Fuel cap / vent





Engine Compartment Oil Level

Oil Level

- Locate dipstick
- Check oil level





Engine Compartment Windshield Washer

Windshield Washer Fluid

- Inspect sight glass





Engine Compartment Coolant Level

Coolant Level

- If engine is cool, remove radiator cap
- Sight glass





Engine Compartment Power Steering

Power Steering Fluid

- Check fluid level

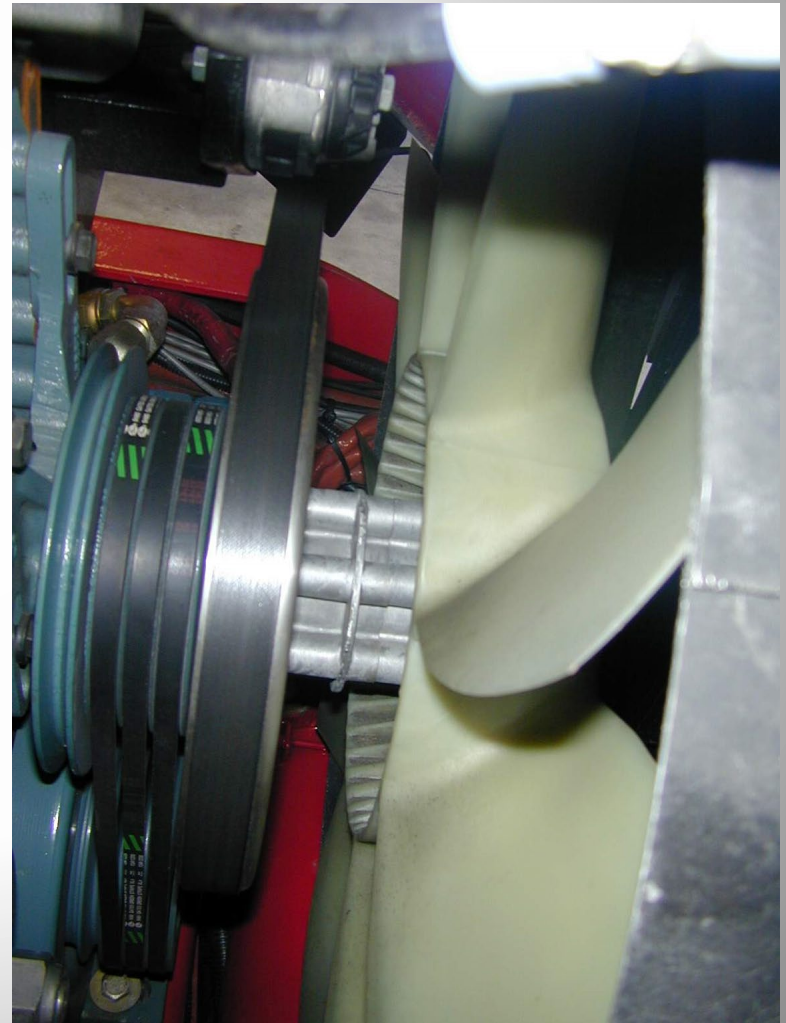




Engine Compartment Belts

Belts

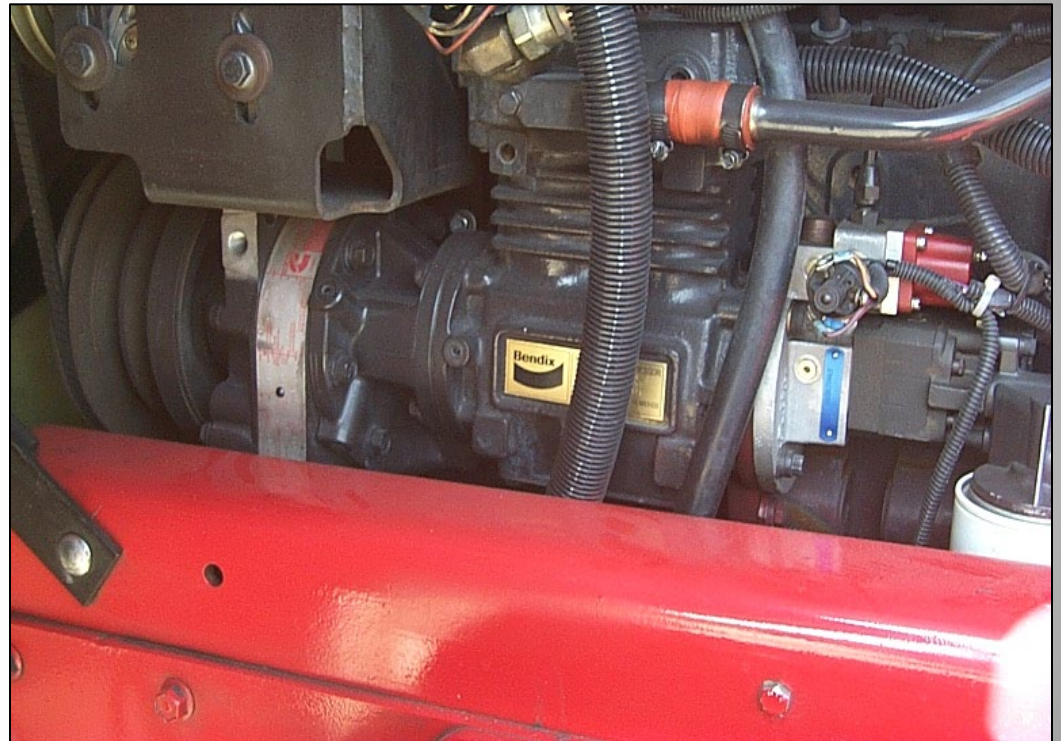
- Check for cracks, frays, or damage
- Snugness: maximum $\frac{3}{4}$ -inch deflection at the center of the belt





Engine Compartment Belt Driven Components

Air Compressor





Engine Compartment Belt Driven Components

Water Pump





Engine Compartment Belt Driven Components

Alternator





Engine Compartment Belt Driven Components

Power Steering



Note: If any of these components are gear driven, driver must mention this to the examiner



Engine Compartment Leaks/Hoses

Leaks/Hoses

- Look for puddles and/or dripping fluid
- Check condition of hoses
- Check that couplings and hose clamps are tight





Cab Check/Engine Start Emergency Equipment

Emergency Equipment

- 10 B:C rated fire extinguisher fully charged
- 3 reflective triangles
- Spare fuses





Cab Check/Engine Start Safety Belts

Seat Belt

- Securely mounted
- Adjusts properly
- Latch and release properly





Cab Check/Engine Start Safety Belts

Seat

- Adjust seat





Cab Check/Engine Start Mirrors and Windshield

Mirrors

- Clean; not damaged
- Adjusted properly





Cab Check/Engine Start Mirrors and Windshield

Windshield

- Clean
- No illegal stickers
- No obstructions
- No damage



Note: Dash area should be clear of any materials



Cab Check/Engine Start Lighting Indicators

Left turn signal



Right turn signal





Cab Check/Engine Start Lighting Indicators

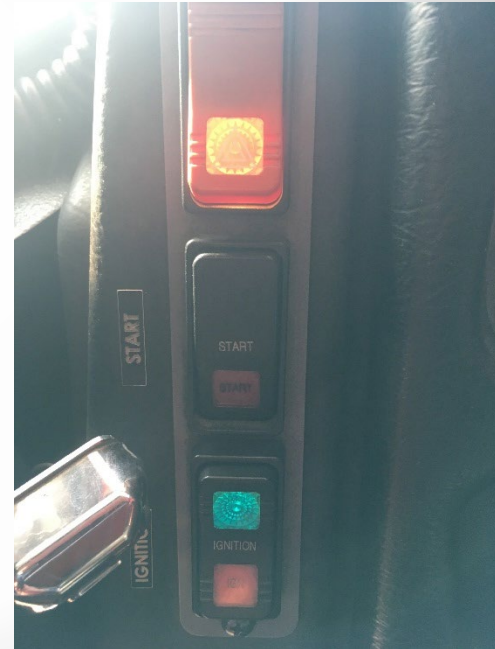
4-way emergency
flashers





Cab Check/Engine Start Lighting Indicators

4-way emergency
flashers





Cab Check/Engine Start Wipers and Washer

Wipers & Washer

- Condition of Blades
- Adequate fluid
- Operational





Cab Check/Engine Start Lighting Indicators

Headlights

- High beam
- Low beam



Note: On request from driver, examiner will assist in checking vehicle lights and indicators



Cab Check/Engine Start Horn

Horn

- Test air and electric
- (verbalize only)





Cab Check/Engine Start Heater/Defroster

Heater/Defroster

- Test that heater and defroster work properly





Cab Check/Engine Start Engine Start

Engine Start

- Place transmission in neutral
- Gearshift/Clutch Working properly and secure.





Cab Check/Engine Start Engine Start

Engine Start

- Ignition switch on
- Start engine

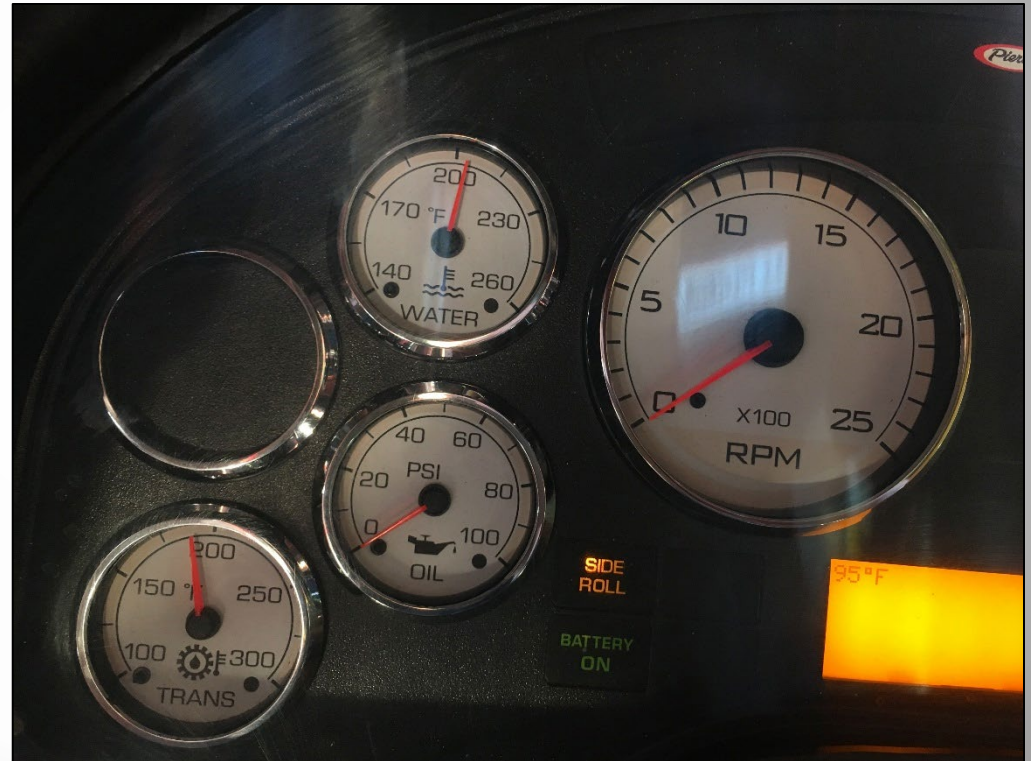




Cab Check/Engine Start Oil Pressure Gauge

Gauges

- Check oil pressure
- Check engine water temperature gauge
- Check transmission temperature gauge





Cab Check/Engine Start

Gauges





Cab Check/Engine Start Ammeter/Voltmeter

Gauges

- Volt meter should read around 14 volts
- Fuel gage reads adequate fuel level, and gage operates approp.





Cab Check/Engine Start Steering Play

Steering Play

- With engine running (power steering), check steering play
- Steering play should not exceed 10 degrees or about 2 inches of travel on a 20-inch steering wheel





Basic Air Brakes Inspection

COALS

- **C = Cut-In**
- **O = Cut-Out**
- **A = Applied Air Leakage**
- **L = Low Pressure Warning**
- **S = Spring Brake Test**

- **Plus 4**



Basic Air Brakes Inspection

Air Compressor Cut-In Pressure

Cut-In

- Start with the air compressor off and engine at idle
- Air pressure gauge should not be moving, indicating air tanks are full and compressor is off





Basic Air Brakes Inspection

Air Compressor Cut-In Pressure

Cut-In Test (cont.)

- With full air tanks, (or with needle stopped) pump the service brake to reduce air pressure by approximately a maximum of 10 psi (1 pump) and wait 20 seconds.





Basic Air Brakes Inspection

Air Compressor Cut-In Pressure

Cut-In Test (cont.)

- Step on the accelerator to 1500 rpm's and see if the needle of the air gauge begins to rise denoting the compressor has turned on. If not, repeat the procedure until the needle of the air gauge begins to rise denoting the compressor has turned on.
- CT IN must occur before the minimum of 100 psi.
- Inform the examiner at what psi the needle began to rise and the compressor turned on.
- If cut in doesn't happen by 100 psi, turn the vehicle in for repair.





Basic Air Brakes Inspection

Air Compressor Cut-Out Pressure

Cut-Out Test

- Watch the needle rise and stop, (denoting the compressor has turned off).
- CUT OUT must occur by the maximum 140.
- Inform the examiner at what psi the needle stopped and the compressor turned off
- If cut out doesn't happen by 140 psi, turn the vehicle in for repair





Basic Air Brakes Inspection

Applied Air Leakage

Applied Air Leakage Test

- With full pressure in the air tanks (cut out)
- Shut the engine off
- Turn the key to “accessory”
- Release the parking brake (s)
- Apply the service brake
- Let the gauges settle
- After initial air loss, wait for 1 minute





Basic Air Brakes Inspection

Applied Air Leakage

Applied Air Leakage Test

- **APPLIED AIR LEAKAGE** must not drop more than 3 psi for a straight truck or 4 psi for a combination tractor/trailer.
- Inform the examiner what psi is acceptable to loose and how much psi the vehicle has lost.
- If the truck loses more than the allotted psi, turn the vehicle in for repair.





Basic Air Brakes Inspection

Low Pressure Warning Signal

Low Pressure Warning Test

- Pump the service brake until the red light appears and the alarm sounds.
- LOW PRESSURE must occur between 75 and 55 psi.
- Inform the examiner at what psi the audio and visual alarms appeared.
- If the low pressure alarms have not come on by 55 psi, turn the vehicle in for repair.





Basic Air Brakes Inspection

Spring Brake Check

Spring Brake Test

- With the parking/emergency brake, and/or tractor protection (class A) valve in the off position (open), pump the service brake to reduce air pressure until the parking brake/tractor protection valve pops out (closes)
- SPRING BRAKE TEST must occur between 45 and 20 psi
- If the spring brake does not pop on by 20 psi turn the vehicle in for repairs





Basic Air Brakes Inspection

Parking Brake Test

#1 Parking Brake Test

- With the parking brake engaged, and the engine on, place the tractor in drive, testing the vehicle's forward movement.
- On a combination tractor/trailer with the parking brake set on the tractor, and off on the trailer, place the vehicle in drive and see if the combination allows forward movement. Repeat the process with the tractor brake off and the trailer brake set.
- If the tractor or trailer move, turn the vehicle(s) in for repair.





Basic Air Brakes Inspection

Service Brake Test

#2 Service Brake Test

- With the parking brake and the trailer protection valve in the off (closed) position, put the vehicle in drive, accelerate to 5 mph and apply the service brake to see if the vehicle(s) stops and/or pulls to one side or the other.
- If the vehicle does not stop or pulls to one side or the other, turn the vehicle in for repair



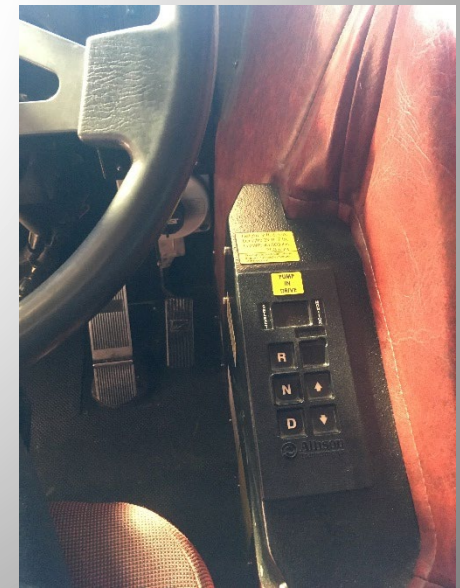


Basic Air Brakes Inspection

Anti-lock Brake System (ABS) Check

#3 ABS Check

- On all ABS equip vehicles, when starting the vehicle, check to ensure the ABS lighting indicator illuminates and promptly turns off.
- On combination vehicles when starting the vehicle, check the driver's side of the trailer to ensure the ABS light indicator illuminates and promptly turns off.
- If the ABS light remains illuminated, turn the vehicle in for repairs.





Basic Air Brakes Inspection Air Pressure Build Up Test

#4 Air Pressure Build Up Test

- Engine must be running at normal operating idle.
- With air pressure below 80 psi, watch the gauge when the gauge reads 85 psi time the compressor build up to 100 psi.
- The compressor must build the air from 85 psi to 100 psi within 45 seconds.
- Inform the examiner how many seconds it took for the air pressure to build from 85 psi to 100 psi
- If the buildup doesn't happen within 45 seconds, turn the vehicle in for repair

