

Table of Contents
OPERATIONS MANUAL
STANDARD INSTRUCTION 02 FIRE SUPPRESSION
SECTION 13 FREEWAY EMERGENCIES

I. PURPOSE.....	2
II. SCOPE	2
III. AUTHORITY.....	2
IV. POLICY.....	2
A. Unified Command Guidelines	2
B. Emergency Medical Operations	Error! Bookmark not defined.
C. Hazardous Material Spills	2
D. SDFD Officer Duties	3
E. CHP Incident Commander Role	Error! Bookmark not defined.
F. Operational Considerations.....	3
G. Freeway Emergencies ICS Chart.....	Error! Bookmark not defined.
H. Interagency Communication for Non-Emergency Issues.....	4
I. Interagency Contact Person Matrix	Error! Bookmark not defined.
K. High Visibility Vests.....	5

TITLE O P E R A T I O N S M A N U A L	STANDARD INSTRUCTION 02		DEPARTMENT F I R E - R E S C U E
SUBJECT FIRE SUPPRESSION: FREEWAY EMERGENCIES	SECTION 13	PAGE 2 of 5	EFFECTIVE DATE 8 March 2018

I. PURPOSE

This policy is designed to provide guidelines and identify operating procedures to be followed by San Diego Fire-Rescue Department (SDFD) personnel and resources during emergencies on freeways, including express lanes.

II. SCOPE

This policy shall apply to all San Diego Fire-Rescue Department (SDFD) personnel.

III. AUTHORITY

The fire chief authorizes the information within this policy.

IV. POLICY

A. Unified Command Guidelines

The California Highway Patrol (CHP) shall have overall authority for scene management of emergency incidents occurring on all freeways and highways where it has primary traffic supervisory authority.

San Diego Fire-Rescue Department (SDFD) shall respond units to all hazard incidents received at Metro Zone Emergency Command and Data Center (ECDC) via CHP dispatch centers. All SDFD command, first responder and 911 transport providers responding to emergencies on freeways shall operate under the following Incident Command System (ICS) Unified Command Guidelines:

1. In the event no CHP officer is on-scene, SDFD units shall operate under established department Incident Command procedures.
2. As soon as possible after CHP and SDFD units both are on-scene, unified command shall be established.
3. The initial SDFD incident commander shall report to the command post (CP) and serve as the SDFD incident command (IC) participant.
4. SDFD units shall cooperate with and assist the CHP Incident Commander in the coordination of managing the emergency.

B. Hazardous Material Spills

SDFD units responding to freeway emergencies involving hazardous materials shall operate under established department procedures listed in the SDFD Operations Manual.

In the event of a hazardous materials spill on the freeway in which the IC determines that the services of a private firm are necessary for identification, containment, or disposal purposes, the following guidelines should be followed:

TITLE OPERATIONS MANUAL	STANDARD INSTRUCTION 02		DEPARTMENT FIRE-RESCUE
SUBJECT FIRE SUPPRESSION: FREEWAY EMERGENCIES	SECTION 13	PAGE 3 of 5	EFFECTIVE DATE 8 March 2018

1. The decision regarding which company to be requested shall be coordinated between affected agencies.
1. The CHP IC shall have the overall responsibility to insure that proper cleanup and disposal operations are performed.

C. SDFD Officer Duties

Every effort shall be made to ensure that an atmosphere of teamwork and cooperation exists between SDFD and CHP personnel while managing emergency incidents on freeways. All SDFD chief and company officers shall strive to insure interagency operations on freeways are conducted professionally.

SDFD officers assuming the duties of IC or IC participant shall operate under the following guidelines:

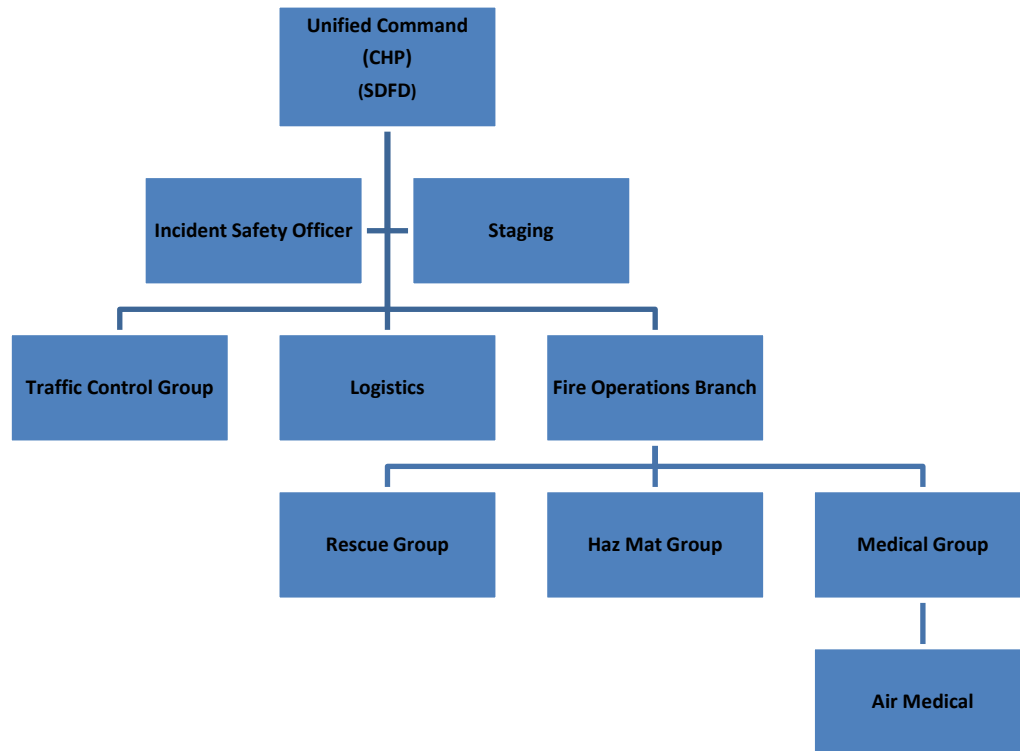
1. Immediately after arriving on-scene, make contact with the CHP IC, when established, to develop incident strategy and tactical objectives and determine the need for additional resources.
2. Identify who should request resources, including additional fire and medical units, and any other resources necessary to mitigate the emergency, including air medical, tow trucks, coroner, Caltrans, hazardous materials teams, etc.
3. Provide CHP IC with timely updates regarding the position, progress and needs of on-going SDFD freeway operations.

D. Operational Considerations

1. Proper positioning of emergency vehicles, taking into consideration the safety of emergency crews and the public
2. Special protection requirements (i.e. downed aircraft, chemical spill)
3. On-scene communications
4. Procedures for alerting agencies with off-highway responsibility
5. Care should be exercised to ensure that an infringement on another agency's area of responsibility or role does not occur
6. Role and authority conflicts shall be resolved by the IC in favor of minimizing the risk of additional injuries
7. Establish unified command
8. Identify a safety officer

TITLE OPERATIONS MANUAL	STANDARD INSTRUCTION 02		DEPARTMENT FIRE-RESCUE
SUBJECT FIRE SUPPRESSION: FREEWAY EMERGENCIES	SECTION 13	PAGE 4 of 5	EFFECTIVE DATE 8 March 2018

E. Freeway Emergencies ICS Chart



F. Interagency Communication for Non-Emergency Issues

In the event an SDFD chief officer or company officer has a need to contact CHP personnel regarding freeway operations, all requests shall be routed through ECDC.

1. The ultimate goal of any dialogue should be education and awareness of each agency's procedure, which will result in improved interagency operations.

G. Interagency Contact Person Matrix

Agency	First Level	Second Level	Third Level	Fourth Level
CHP	State Traffic Officers	Sergeant / Field Supervisor	Lieutenants	Captain
911 Transport Provider	Field Paramedics	Paramedic Field Supervisor	Paramedic Operations Manager	Chief Operating Officer
SDFD	Firefighters	Company Officer	Battalion Chief	Deputy Chief

TITLE O P E R A T I O N S M A N U A L	STANDARD INSTRUCTION 02		DEPARTMENT F I R E - R E S C U E
SUBJECT FIRE SUPPRESSION: FREEWAY EMERGENCIES	SECTION 13	PAGE 5 of 5	EFFECTIVE DATE 8 March 2018

H. High Visibility Vests

1. Federal Regulation 23 CFR 634 states that all workers within the right-of-way of a Federal-aid highway shall wear high-visibility safety apparel.
2. To meet this requirement, all personnel will wear their high-visibility vest on all freeway incidents.
3. In consideration of OSHA regulations regarding firefighter PPE requirements, the following are exceptions to this policy:
 - a. Crew members are *actively* engaged in firefighting.
 - b. Crew members are *actively* involved in vehicle extrication.
 - c. Crew members are *actively* involved in the mitigation of a hazardous materials incident.
 - d. Any time the incident commander determines that the use of the vests create a safety issue for incident personnel.

On-scene personnel not directly exposed to fire, flame, excessive heat or hazardous materials ARE expected to wear high-visibility vests including pump operators, support personnel, command officers, etc.