



# Fire Ground Survival

## Chapter 5: Fire Fighter Expectations of Command



# Objectives

Students will be able to:

- Describe the characteristics of a leader when a member is experiencing a Mayday.
- Identify the fire service standards that encourage training on Mayday operations.
- Explain the Incident Commander's role in preparing for a Mayday.
- Explain the Incident Commander's role during a Mayday.
- Explain the Incident Commander's role after a Mayday is concluded.
- Explain how expanding the incident command system can assist in successful operations during a Mayday.



# Expectations

As a fire fighter, what do you expect from the Incident Commander in a Mayday situation?







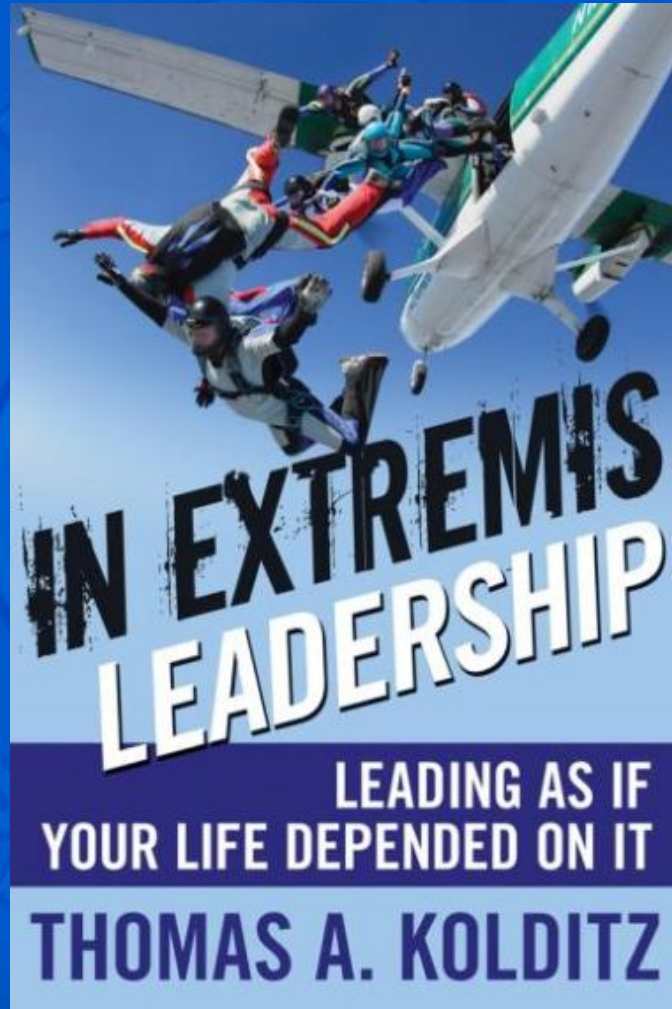
# Fire Fighter Expectations of the IC

1. Listening: so the IC can hear the call for help.
2. Acting: sending RIC quickly to locate and remove the distressed fire fighter.
3. Responding: providing appropriate medical care to the distressed fire fighter.

Overall, the fire fighter expects the IC to be in charge and  
**COMMAND**



# In Extremis Leadership





# Competence

Becomes the primary basis for trust.

Leaders should calm down, not spin up, during a Mayday. Focus energy, don't create it. Quiet, steady competence is what people need from leaders during crisis.

*Colonel Thomas Kolditz*





# Focus

Leader must focus outward on environment and problem.

Outward focus must accomplish three specific tasks:

- Make sense of what's causing the Mayday.
- Control emotions.
- Orient on learning from the event.

*Colonel Thomas Kolditz*



# Mayday Thoughts from an Incident Commander

- Read the experience of the Tucson Fire Department.
- Identify the lessons learned from this incident.







# Mayday Thoughts from an Incident Commander

## Lessons Learned

### Pre-Planning:

- Lightweight construction.
- Joist hangers, gang nail plates.
- **KNOW DANGERS!**



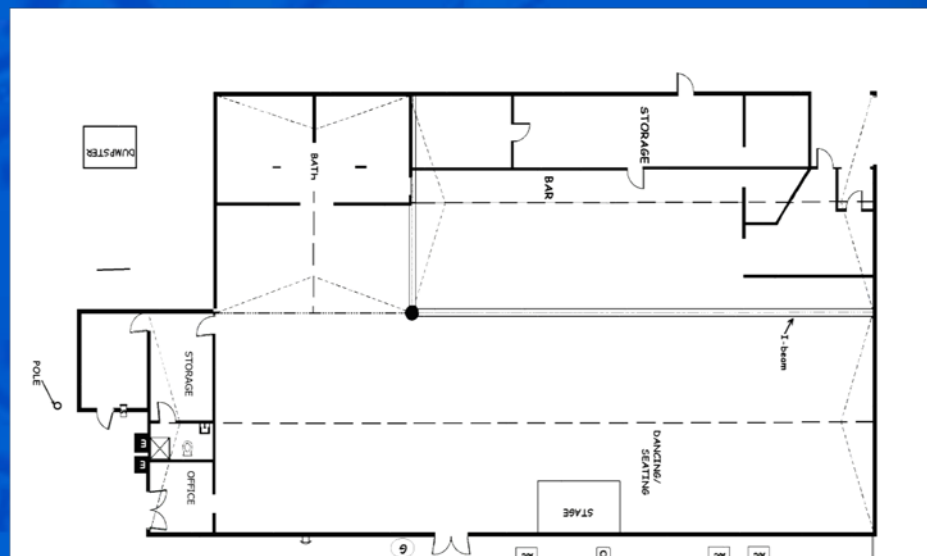


# Mayday Thoughts from an Incident Commander

## Lessons Learned

### On-scene Size Up:

- Accurate-Long Look.
- Exterior and interior.
- All personnel.
- **KNOW DANGERS!**







# Mayday Thoughts from an Incident Commander

## Lessons Learned

### Self-Survival Training:

- Fire fighters self rescue.
- Training.
- Know emergency evacuation.







# FGS Video Questions

- Are you ready to take Command of a Mayday?
- Are you listening carefully?
- Do you have a plan?
- What are your initial actions?
- Will the fire fighter have confidence in you?



Open Video File: "IAFF FGS Module 3 – Fire Fighter Lost and Separated from Crew "

# Watch Module 3 of Fire Ground Survival Video

Fire Fighter Lost and Separated from Crew



# Need for Command Level Mayday Training

- NFPA standards are “best-practices”.
- Many current standards speak to this need.







# Need for Command Level Mayday Training

Fire Service Standards Supporting Mayday Command Training:

NFPA 1021 *Standard for Fire Officer's Professional Qualifications* 2-6.3 states:

*“...all officers have the ability to implement the IMS (incident management system), to communicate verbally, and to supervise and account for personnel under emergency conditions.”*



# Need for Command Level Mayday Training

Fire Service Standards Supporting Mayday Command Training:

*NFPA 1500 Standard on Fire Department Occupational Safety and Health Program states:*

*“...all members who are likely to be involved in emergency operations shall be trained in the incident management and accountability system used by the department.”*



# Need for Command Level Mayday Training

Fire Service Standards Supporting Mayday Command Training:

NFPA 1500 *Standard on Fire Department Occupational Safety and Health Program* states:

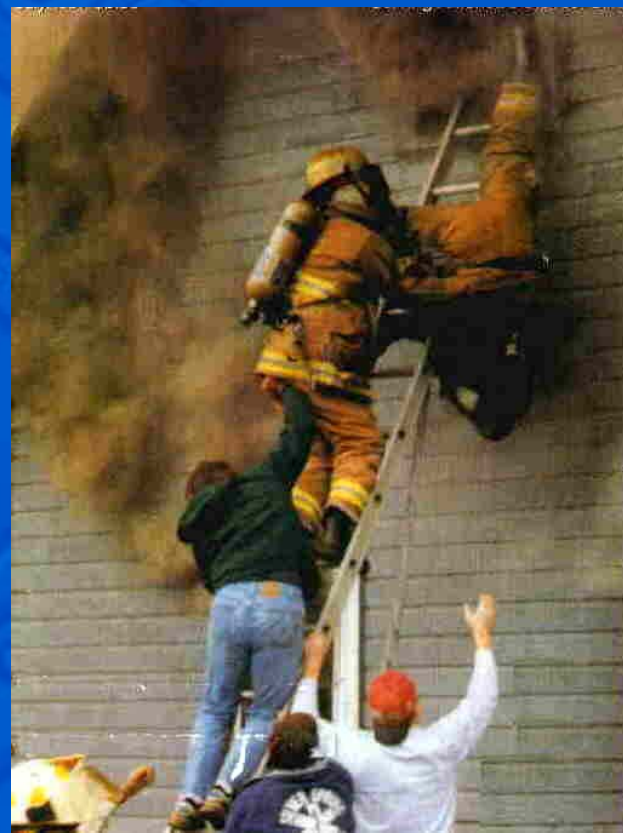
*“...the fire department shall adopt or develop training and educational curriculums that meet the minimum qualifications standard covering the members assigned function.”*



# Need for Culture Change



- Calling a Mayday often seen as a failure or weakness.
- IC must set expectations for calling the Mayday.
- Fire fighters must KNOW they have support.





# Pre-Mayday Expectations of IC

1. Pre-Mayday IC Responsibility  
CAUTION

2. IC Responsibility During Mayday  
DANGER

3. IC Responsibility After Rescue is Complete  
RETURN to NORMAL OPERATIONS



# Pre-Mayday Expectations of IC

## 1. Pre-Mayday IC Responsibility

- |     |   |
|-----|---|
| 1.1 | Command Post Positioning                        |
| 1.2 | Assure Appropriate Levels of Resources Staged   |
| 1.3 | Identify Geographical References                |
| 1.4 | Accountability Tracking System Functional       |
| 1.5 | Appropriate Medical Resources on Scene          |
| 1.6 | Assigns RIC Resource(s)                         |
| 1.7 | Assigns Command Officer to RIC Group Supervisor |
| 1.8 | Requests Additional RIC Resources               |
| 1.9 | Establishes a Communications Plan               |





# Pre-Mayday Expectations of IC

## 1.1

### Positions Command Post



- “Cold zone”.
- Visualize 2 sides.
- Uphill, upwind.
- Out of the way, nearby.
- Easy to locate.



# Pre-Mayday Expectations of IC

## 1.2

### Assure Appropriate Levels of Resources Staged



Assume a Mayday will be called...and be ready with resources.

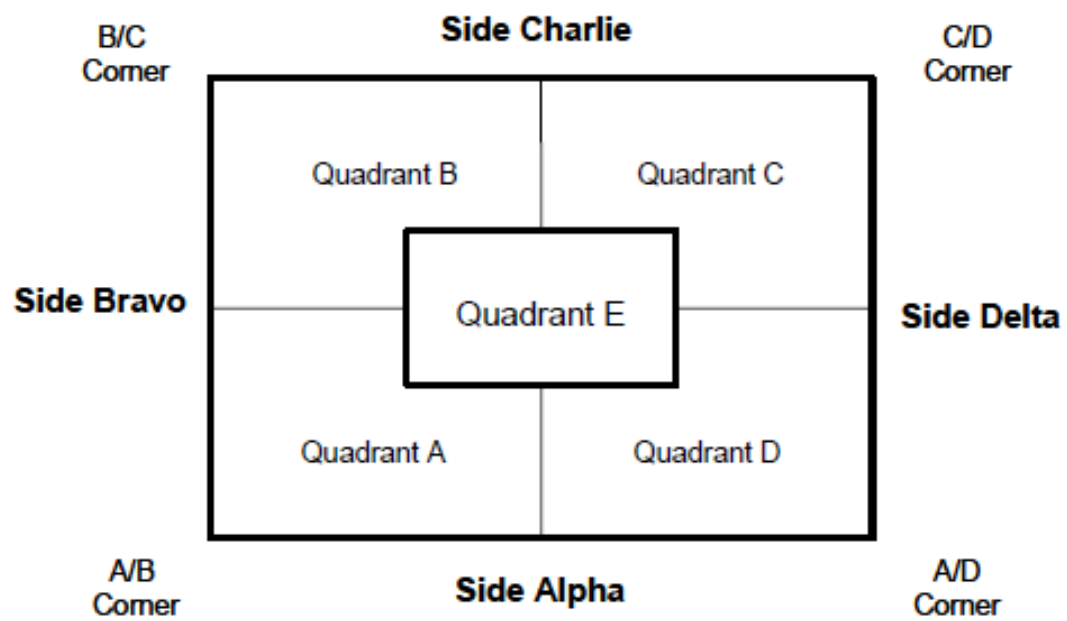




# Pre-Mayday Expectations of IC

## 1.3

### Identify Geographical References of the Structure



Multiple Stories:  
Divisions  
3  
2  
1 (ground)

360 degree view is best.





# Pre-Mayday Expectations of IC

## 1.4 Accountability System Functional

**MULTI-STORY FIRE INCIDENT COMMAND WORKSHEET**

Incident Information					
Incident Name					
ICP Location					
Staging Location					
Business					
Owner/OP	Phone				
Drop Time	Knock Down				
Additional Info					
Resources					
Units	Report	Assign	Rehab	Avail	
E					
E					
E					
E					
TIQ					
TIQ					
S					
EST					
BC					
BC					
E					
E					
E					
TIQ					
HS					
HMTF					
USAR					
MAU					
BC					
AC					
Copter					

**Incident Command**

- Safety
- PIO
- Liaison

**RIC**

**Div A**

**Div B**

**Div C**

**Div D**

**OPS**

- Rescue/Search
- Exposures
- Fire Attack
- Ventilation

**Logistics**

- Lobby / Systems
- Base Manager
- Medical Unit
- Rehab Unit

Roof Div	Needs				Status			
Div	<input type="checkbox"/> Fire	<input type="checkbox"/> Search	<input type="checkbox"/> Smoke	<input type="checkbox"/> Clear	<input type="checkbox"/> Fire Attack	<input type="checkbox"/> Ventilation	<input type="checkbox"/> Rescue	<input type="checkbox"/> Salvage
Div	<input type="checkbox"/> Fire	<input type="checkbox"/> Search	<input type="checkbox"/> Smoke	<input type="checkbox"/> Clear	<input type="checkbox"/> Fire Attack	<input type="checkbox"/> Ventilation	<input type="checkbox"/> Rescue	<input type="checkbox"/> Salvage
Div	<input type="checkbox"/> Fire	<input type="checkbox"/> Search	<input type="checkbox"/> Smoke	<input type="checkbox"/> Clear	<input type="checkbox"/> Fire Attack	<input type="checkbox"/> Ventilation	<input type="checkbox"/> Rescue	<input type="checkbox"/> Salvage
Div	<input type="checkbox"/> Fire	<input type="checkbox"/> Search	<input type="checkbox"/> Smoke	<input type="checkbox"/> Clear	<input type="checkbox"/> Fire Attack	<input type="checkbox"/> Ventilation	<input type="checkbox"/> Rescue	<input type="checkbox"/> Salvage
Div	<input type="checkbox"/> Fire	<input type="checkbox"/> Search	<input type="checkbox"/> Smoke	<input type="checkbox"/> Clear	<input type="checkbox"/> Fire Attack	<input type="checkbox"/> Ventilation	<input type="checkbox"/> Rescue	<input type="checkbox"/> Salvage

**Communications Plan**

Command: \_\_\_\_\_

Tactical: \_\_\_\_\_

Others: \_\_\_\_\_

**Checklist**

**Size Up**

- Products of combustion / Floor number
- Est. smoke above 10th on 2nd alarm
- Type of occupancy / # of floors
- Initial Assignments
  - Engineer secures water supply to FDC
  - Elevators Place in Phase 1
  - Annunciator Checked for fire locations
  - Obtain info from Occupant / Manager
  - Access Appropriate Smoke Towers / Stairs
  - Check two floors below for staging
  - Check floors above and below
  - Check conditions on fire floor
  - Stairwell Access
  - Stair Reports to IC

**Assignments**

- Fire Attack
- Water Supply - Sprinklers / Standpipes
- Rescue / Evacuation
- Staging
- Ventilation (Time stamp \_\_\_\_\_)
- R.I.C. Established
- Exposures floors above and below fire
- Logistics Chief
- Lobby and System Control
- Stairwell Support
- Base

**Safety Officers**

**Follow Up Report**

- Incident Name / Assume Command
- Command Post Location
- Communications Plan with additional frequencies
- Additional Resources
  - Check In
  - Law Enforcement
  - Traffic Control
  - Move Up
  - Status Reports (units 10, LA, 30)
  - Relay Location

**Notifications**

- Utility Companies (Gas / Electric / Water)
- Building / Safety
- City

**Additional Considerations**

- Investigation code
- Cobalt
- Rehab
- Medical
- Air Cache
- Fire
- Red Cross: # of Victims / Age / Sex

- Track Personnel Using:
- Command board.
  - Tactical worksheet.
  - Accountability roster.
  - T-card.



# Pre-Mayday Expectations of IC

1.5

## Appropriate Medical Resources On-Scene



### Stage EMS Units:

- Easy access.
- Dedicate unit for fire fighters.





# Pre-Mayday Expectations of IC

## 1.6

### Assign RIC Resources

- RIC Leader to CP.
- RIC Assigned Early to Soften Building:
  - Keep access and egress routes clear.
  - Tool and equipment cache.
  - Ladders.
  - Light egresses.
  - Remove bars.
  - Hose line protection.





# Pre-Mayday Expectations of IC

1.7

## Assign Command Officer to RICGS



If Possible Prepare for Mayday  
Early:

- Assign Command Officer to RIC Group Supervisor position at CP.



# Pre-Mayday Expectations of IC

1.8

## Request Additional RIC Resources



- Pre-designate the resources used to support RIC.
- Staged RIC resources ready to be deployed when requested by IC.





# Pre-Mayday Expectations of IC

1.9

## Establish Communication Plan



- Dispatchers are Mayday trained.
- Uninterrupted contact with fire fighter.





# Mayday and Rescue Expectations of IC





# Mayday and Rescue Expectations of IC

## 2. IC Responsibility During Mayday

2.1	Receives Mayday From the Fire Fighter
2.2	Controls Communications on Radio Channel
2.3	Listens to Radio to Identify Fire Fighter
2.4	Contact Not Established with Fire Fighter?
2.5	Deploys RIC
2.6	Repeats Mayday Call Back to Distressed Fire Fighter
2.7	Mayday Notification to All Resources and Dispatch
2.8	Additional Resources and Frequency Requested
2.9	Resources to Maintain Current Assignments and Switch Freq.
2.10	Expand ICS to Accommodate Mayday
2.11	Obtain PAR From Each Unit Assigned to Operational Area
2.12	Maintain Suppression Efforts
2.13	Expand Command Support Team
2.14	Obtain Follow-up Reports on RIC Rescue Efforts
2.15	Re-evaluates Incident Action Plan
2.16	Terminate Mayday





# Mayday and Rescue Expectations of IC

## 2.1

Receive Mayday from Fire Fighter Continued.







# Mayday and Rescue Expectations of IC

## 2.1

Receive Mayday from Fire Fighter Continued.



IC Prepared to Receive Mayday:

- Command Post well organized.
- Radio volume up – earpiece?
- Command sheets maintained.



# Mayday and Rescue Expectations of IC

## 2.2

Control Communications on Radio Channel used by  
Fire Fighter Calling the Mayday



*“Mayday,  
Mayday, Mayday”*



*“Unit calling Mayday,  
identify.”*





# Mayday and Rescue Expectations of IC

## 2.3

### Identify Fire Fighter Calling the Mayday



*“This is Fire Fighter Smith from Engine 1, I’m lost somewhere on the first floor.”*





# Mayday and Rescue Expectations of IC

## 2.3

Identify Fire Fighter Calling the Mayday continued.



- IC Listen Carefully:
- Who/What/Where?
  - Document.
  - Commit to memory.



# Mayday and Rescue Expectations of IC

## 2.4

### If No Contact, Identify Fire Fighter's Last Known Location



- Last report received by company may indicate location.
- IC contacts company officer or others nearby.





# Mayday and Rescue Expectations of IC

## 2.5

### Deploy RIC



- RIC Leader positioned at CP.
- Intel from IC to RIC Leader:
  - Name and assignment.
  - Last known location.
  - Radio channel.
  - Special rescue information.





# Mayday and Rescue Expectations of IC

## 2.6

### Repeat Mayday to Distressed Fire Fighter



*"E1 Fire Fighter Smith from IC, I copy that you're lost on the 1st floor. RIC is deployed. Stay calm, conserve your air, and turn on your light, we're on our way."*



# Mayday and Rescue Expectations of IC

## 2.7

### Notify all Resources Assigned to the Incident



*“Emergency Traffic – All units assigned to the Central Incident, we have a Mayday from fire fighter Smith from E1 lost on the first floor, maintain your current operational assignments unless re-directed for rescue.”*





# Mayday and Rescue Expectations of IC

## 2.8

Advise Dispatch of Mayday and Request Additional Resources and Consider Requesting an Additional Tactical Radio Frequency



*“Dispatch from IC, we have a fire fighter Mayday. Start additional alarm resources, assign an additional tactical channel, and have all resources stage at First and Central.”*



# Mayday and Rescue Expectations of IC

## 2.9

Advise all Resources to Maintain Their Current  
Tactical Assignments and Switch Tactical  
Frequencies if Possible



*“All units assigned to the Central Incident, maintain your current tactical assignments and switch to tactical channel 2.”*





# Mayday and Rescue Expectations of IC

## 2.10

### Expand ICS to Accommodate the Mayday

Assign RIC Group Supervisor:

- Manage rescue.
- Communicate with RIC and fire fighter.
- Allows IC to focus on incident operations.
- If not possible, then IC to focus on Mayday.



# Mayday and Rescue Expectations of IC

## 2.11

Obtain a PAR From Each Unit Assigned to the Operational Area – “Hot Zone”

- PAR should not disrupt rescue.
- Performed by company officers and division/group supervisors.
- Face to face if possible.
- Transmitted using roll call.





# Mayday and Rescue Expectations of IC

2.12

## Maintain Suppression Efforts



- Provide survivable space.
- Put out the fire.
- Protect egresses.
- Ventilate.
- Lighting.



# Mayday and Rescue Expectations of IC

2.13

## Expand the Command Support Team

Consider Adding:

- Additional Safety officers.
- Personnel to monitor radio.
- Accountability officer.
- Sit-Stat/ Re-stat.
- Additional Chief Officers.





# Mayday and Rescue Expectations of IC

2.14

## Obtain Follow-up Reports on RIC Rescue Efforts



- RIC Situation Report
  - Conditions
  - Actions
  - Needs
- Short and concise

*“IC from RIC, Thick smoke, need ventilation, still searching, we can hear fire fighter Smith’s PASS.”*



# Mayday and Rescue Expectations of IC

2.15

## Re-evaluate the Incident Action Plan



- Building structurally compromised?
- Fire complicating RIC operations?
- Can operation affect a rescue?
- Do fire fighters need rehab?





# Mayday and Rescue Expectations of IC

2.16

## Terminate the Mayday



- Conduct PAR after rescue confirmed.
- IC terminates Mayday when all accounted for.
- IC confirms all injured fire fighters treated and/or transported.



# Post-Rescue Expectations of IC







# Post-Rescue Expectations of IC

## 3. IC Responsibility After Rescue is Complete

- |     |   |
|-----|---|
| 3.1 | Return Incident Communications to Operations        |
| 3.2 | Re-define Incident Priorities                       |
| 3.3 | Ensure Fresh Crews Available                        |
| 3.4 | Utilize Public Information Officer (PIO)            |
| 3.5 | Determine Need for Investigation Team               |
| 3.6 | Assess Need for Critical Incident Stress Debriefing |
| 3.7 | Direct Post-Incident Review                         |



# Post-Rescue Expectations of IC

## 3.1

### Return Incident Communications to Normal Operations

*“Dispatch from Central IC... E1 fire fighter is outside the structure with no injuries; PARs received from all units indicate all accounted for. Return incident communications to normal operations.”*





# Post-Rescue Expectations of IC

## 3.2

### Re-define Incident Priorities



1. Life safety.
2. Limiting growth of the fire.
3. Saving property.
4. Preserving the environment.



# Post-Rescue Expectations of IC

## 3.3

### Assure Fresh Crews Available



- Mayday operations stressful & fatiguing.
- Require high degree of mental awareness.
- Consider creating fire fighter Rehab Unit under Logistics.
- Crews rotated between operational and rehab areas.





# Post-Rescue Expectations of IC

## 3.4

### Utilize Public Information Officer

- Media come on scene quickly during a Mayday:
  - They want names.
  - All information released approved by IC.
  - Family Liaison or Medical Liaison to notify family.



# Post-Rescue Expectations of IC

## 3.5

### Determine Need for Investigation Team

- Establish a perimeter.
- Limit unnecessary personnel.
- Possibility of the incident becoming a crime scene.





# Post-Rescue Expectations of IC

## 3.6

### Assess Need for Critical Incident Stress Debriefing

- A Mayday is highly emotional event.
- Individuals may feel responsible/guilt.
- Consider behavioral health professionals to offer follow-up care.



# Post-Rescue Expectations of IC

## 3.7

### Direct Post-Incident Review

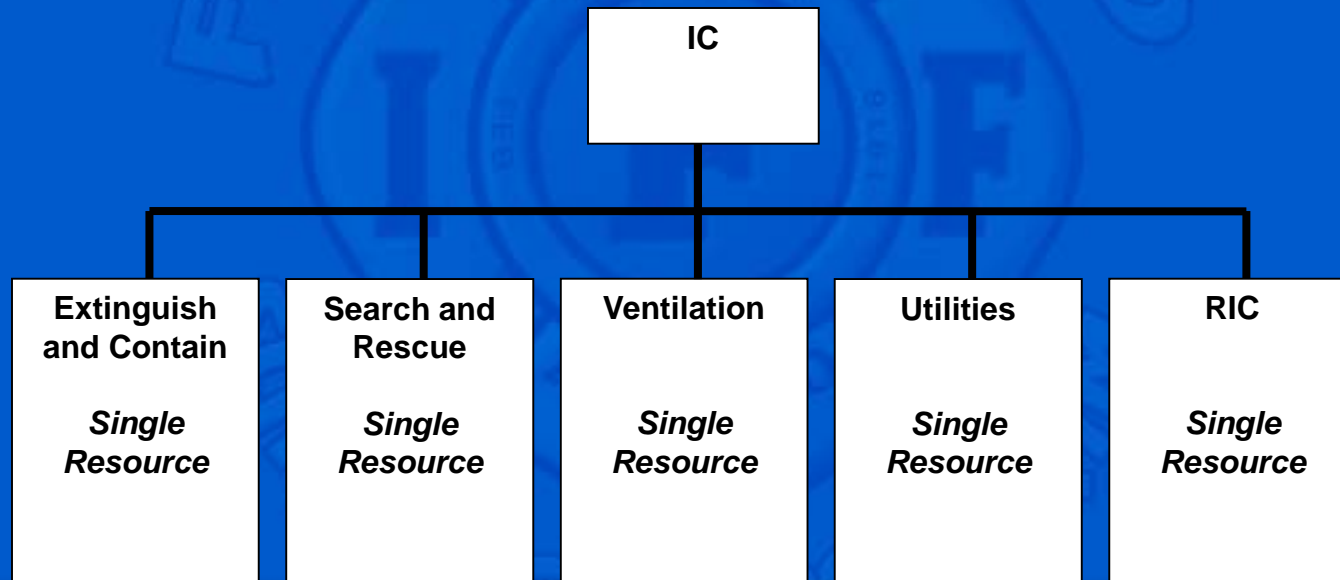
- Before leaving scene IC assigns investigation team:
  - Re-create incident for post-incident analysis.
  - Personnel assigned to incident share what they learned.
- Lessons learned from a Mayday incident can result in improved department SOGs.





# Expanding ICS in Preparation for Mayday

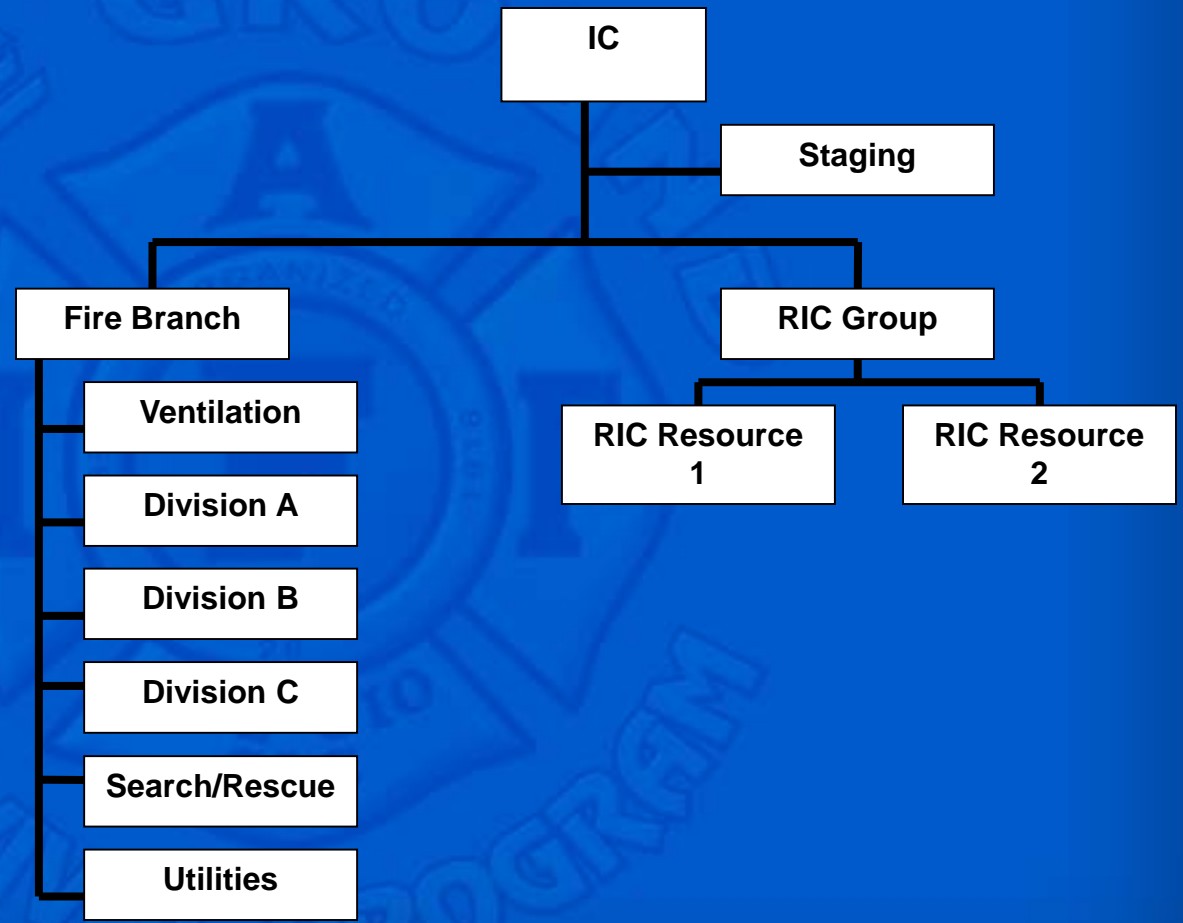
- Initial stage (first alarm resources):
  - Single resources are assigned tactical objectives.

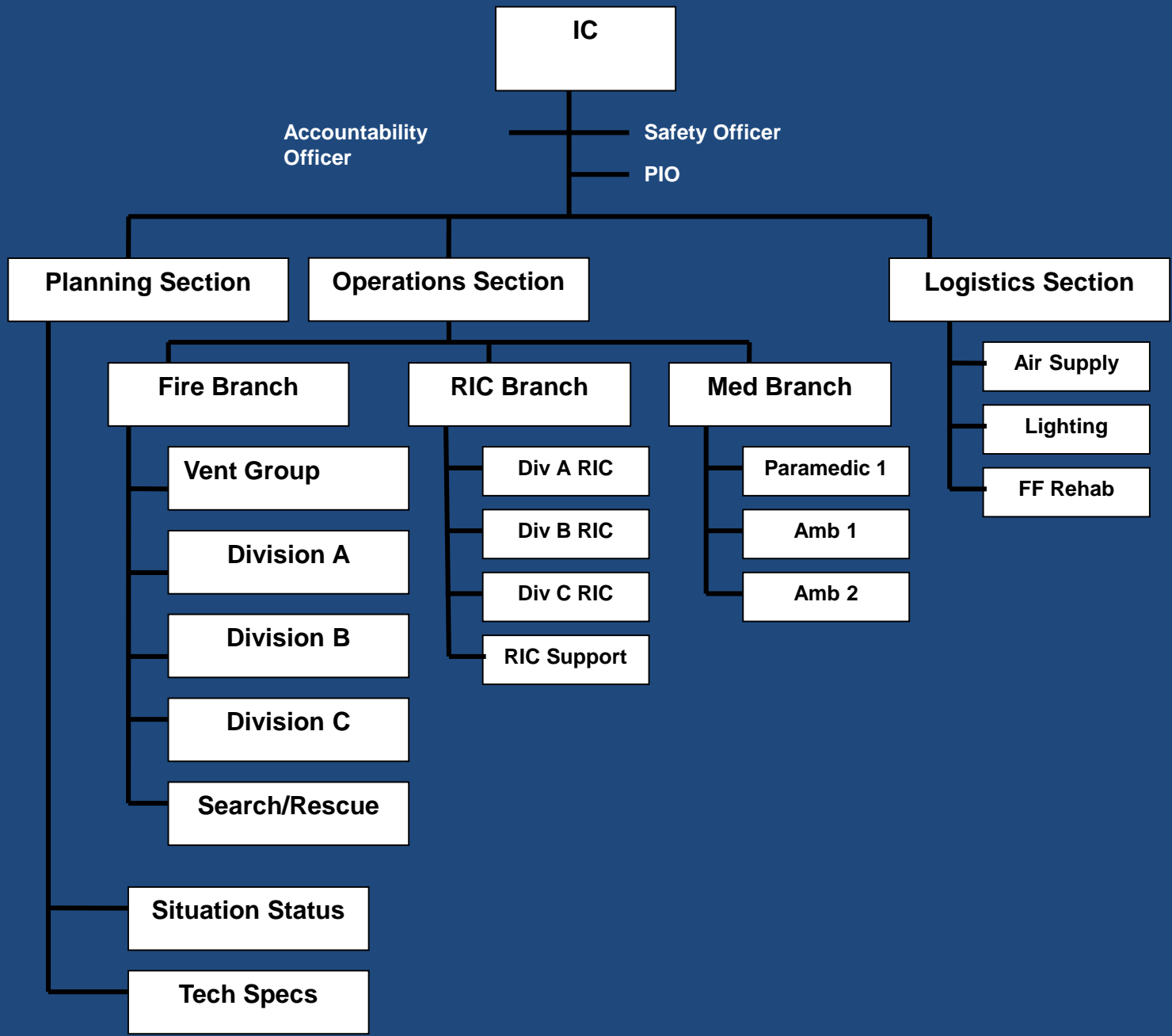




# Expanding ICS in Preparation for Mayday

- All first alarm resources have tactical assignments:
  - Additional resources needed to support RIC.









# Fire Ground Survival

## Chapter 5: Fire Fighter Expectations of Command **SUMMARY**