

Evacuation/Repopulation



Objectives

- Understand the roles of Fire and Law Enforcement
- Become familiar with the Joint Fire/Law Enforcement Evacuation Checklist and its use
- Understand planning, coordination and communication requirements between agencies with a role in evacuation and repopulation



Objectives continued

- Understand the use of the SDPD / SDFD Evacuation/Repopulation plan
- Become familiar with mapping products available for determining areas for Evacuation Orders and Evacuation Warnings



Why was the checklist developed?

Issues identified from previous fires

- Need for common maps
- Communications problems between field personnel and Alert San Diego
- Terminology confusion
- Repopulation issues



Joint Fire/Law Enforcement Evacuation Definitions

Command Definitions

Unified Command

- An incident whereby law enforcement has jurisdictional responsibilities within the incident. In this instance the law enforcement representative will respond to the command post and become the Unified Law Enforcement Incident Commander. It is imperative this person remain at the ICP and stay in constant contact with the fire department Unified Incident Commander. All Unified Incident Commanders will be authorized to make command level decisions, and expend funds on behalf of their department.



Command Definitions

Agency Representative

- An incident whereby law enforcement is assisting the fire department with operations which does not require unified command roles, responsibility or authority. In this instance the law enforcement representative will respond to the command post and interface with the fire department incident commander and attend all cooperators meetings, planning meetings and operational briefings.



Evacuation Definitions

Evacuation Order

- Movement of community members out of an affected area due to an immediate threat to life and property from an emergency incident.



Evacuation Definitions

Evacuation Warning

- Alerting of community members in a defined area of a potential threat to life and property from an emergency incident. Evacuation may be ordered as a result of the threat. Usually in excess of 2 hours.



Evacuation Definitions

Shelter in Place

- Directing community members to stay secured inside their current location. Only used if the safety of the citizens can be assured if they remain; or if evacuation will cause a higher potential for loss of life.



Road Closure Definitions

Hard Closure-Closed to all traffic except Fire and Law



Road Closure Definitions

Soft Closure - Closed to all traffic except FD, LE and critical incident resources (i.e. utility companies CalTrans, County Roads, etc.)



Road Closure Definitions

Resident only Closure

- Soft closure with the additional allowance of residents and local government agencies assisting with response and recovery.

Full Hard (Isolation) Closure

- Closed to all traffic, including FD and LE



Media Access

Note: Media is allowed access under all closure levels unless prohibited under PC 409.5



Joint Fire/Law Enforcement Evacuation Checklist

FIRE

- Assume command of the incident
- Conduct a situation assessment and evaluate need for evacuations
- Establish an incident command post and announce its location
- Request a Law Enforcement response to the ICP from the agency having jurisdiction
- Evaluate and determine whether the Law Enforcement role will be as an Agency Representative or integrated into the Single Incident Command organization.
- If Establishing Unified Command, request additional personnel resources from the agency having jurisdiction in order to do so as soon as possible.



INCIDENT COMMAND / UNIFIED COMMAND

- Assess and validate the need for an **Evacuation Warning, Evacuation Order, and/or Shelter in Place** notification. Determine the location, potential size, speed, and direction of travel or spread of the incident.
- Request appropriate resources to complete life-saving incident objectives concurrently
- Identify evacuation areas
 - Identify areas that must be immediately evacuated and label “evacuation order” areas.
 - Identify areas that should be notified of the likelihood of evacuations within a two hour time frame and label “evacuation warning” areas.
- Identify traffic control points and levels of road closure
- Determine and disseminate preferred evacuation routes
- Identify temporary evacuation points and shelters for citizens and animals
- Complete initial Evacuation Plan utilizing San Diego County Public Safety Grid pages as a common map reference.
- Advise the appropriate Law Enforcement Communications Center utilizing the Public Safety Map Grids for public notification of Evacuation Warnings and Evacuation Orders via the Alert San Diego regional notification system.



LAW ENFORCEMENT

- Respond officer or supervisor directly to the Incident Command Post and make contact with the Incident Commander. Notify the Incident Commander of evacuations, which may have taken place prior to their arrival
- The Incident Commander will introduce the appropriate contact person within the Command & General Staff (Liaison Officer –if filled or Operations Section Chief) based on incident response organization
- Establish a reliable, ongoing communications channel – phone, radio or assign an employee at the ICP
- Receive a defined mission. Request additional resources needed to complete the assigned mission. Report mission progress and completion to the assigned contact person at the ICP.
- If the IC indicates Unified Command will be established, request additional personnel resources report to the ICP
- Receive additional missions from the assigned contact person or report to the incident staging area and await reassignment or release from the incident
- Remember to park and position vehicles to maintain ingress and egress routes for other emergency vehicles
- Assigned Missions may include:
 - Establish perimeter control- keep unauthorized vehicles and pedestrians out of involved area
 - Conduct evacuations, if required and at the direction of the Incident Commander
 - Establish anti-looting security patrols for evacuated areas, within the perimeter and when safe to do so
 - Staff temporary evacuation points and shelters for citizens and animals to provide security and information
 - Establish traffic control posts to assist flow of evacuees leaving the incident area
- Maintain a record of incident activities performed, preferably using a Unit Log (ICS 214 form)



Evacuation Checklist

- These checklists are intended to assist field supervisors in the initial stages of a fire or other emergency requiring evacuations where the Fire Department is the authority having jurisdiction. These guidelines are flexible and can be modified to address specific field situations:



Fire Department Responsibilities

- Assume command of the incident
- Conduct a situation assessment and evaluate need for evacuations
- Establish an incident command post with sufficient room for representatives from other assisting agencies and announce its location
- Request Agency Representative from Law Enforcement to respond to the ICP



SDPD Responsibilities

- Respond Officer to Incident Command Post, make contact with IC
- IC will introduce PD rep to command staff based on incident complexity
- Establish reliable, ongoing communications with IC (Liason, Ops)
- Receive mission, request resources, report mission progress
- Notify the Incident Commander of evacuations, which may have taken place prior their arrival
- If Unified Command is established, request additional personnel
- Position vehicles for ingress and egress of roadways
- Perimeter control
- Conduct evacuations
- Anti-looting patrols
- Staff temporary evac points and shelters (citizens, animals)
- Establish traffic control points
- Maintain records (ICS 214)



IC/Unified Command Responsibilities

- Evaluate and determine whether Law Enforcement role will be as an Agency Representative or Unified Incident Commander depending on the scope of the incident
- Assign a Law Enforcement supervisor to work closely with the Operations Section Chief or Incident Commander, whoever is determining areas to be evacuated.
- Assess and validate the need for an Evacuation Warning, Evacuation Order, and/or Shelter in Place. Determine the location, potential size and direction of incident travel or spread.



IC/Unified Command Responsibilities

- Unified Commanders Determine potential for incident spread and request appropriate resources to complete evacuation and mitigate incident concurrently
 - Identify areas that must be immediately evacuated and label “evacuation order” areas.
 - Identify areas that should be notified of the likelihood of evacuations within a two hour time frame and label “evacuation warning” areas.



Joint Fire/Law Responsibilities

Identify traffic control points and Levels of Closure

- Hard Closure
- Soft Closure
- Resident Only Closure
- Isolation Closure



IC/Unified Command Responsibilities

- Determine and disseminate evacuation routes
- Complete initial Evacuation Plan utilizing San Diego County Public Safety Grid pages as a common map reference
- Advise the appropriate Law Communications Center utilizing the Public Safety Map Grids for notification of Evacuation Warnings and Evacuation Orders via the Alert San Diego regional notification system.
- Coordinate closely with Command and General Staff managing the incident.





Additional Considerations

Temporary Evacuation Points (TEP)

- Temporary Evacuation Points (TEP) should be established if an evacuation location has not been determined.
- Fire and Law Enforcement need to collaboratively work together to identify, select, and establish a safe location for a TEP.



Temporary Evacuation Points (TEP) Requirements

- The TEP needs to be in the direction of the evacuation route and be large enough to temporarily accommodate evacuees until a shelter is established.
- Park-and-Rides, rest stops, or the parking lot of a government building are some examples of possible TEP's.
- A representative from Fire or Law Enforcement should be assigned to the TEP to keep evacuees informed on changes during the response.
- The Red Cross can provide a canteen to these areas if requested.



Shelter Locations

- Shelters are predesignated by the American Red Cross.
- Shelter decisions during an event should be made in consultation with both Fire and Law Enforcement.
- The Red Cross should be consulted during the decision making process to obtain facility manager contact information and shelter availability.



Evacuation Notification Process

- Fire determines areas needing Evacuation Warnings and Evacuation Orders in consultation with Law Enforcement
- Law Enforcement executes the orders and advises the SDPD Operations Center / Communications Center to activate Alert San Diego and to arrange door-to-door or other notifications



Notification process

- Law Enforcement supervisor in the field (Agency Representative or Unified Incident Commander) will advise the appropriate Law Communications Center utilizing the Public Safety Map Grids for notification of Evacuation Orders and Evacuation Warnings via the Alert San Diego regional notification system.



Incident PIOs role

- Fire and Law Enforcement will develop and validate information for release to the news media and public through the Incident Public Information Officer (PIO)





Repopulation Process



Repopulation

Planning for the timely repopulation of evacuated residents is a critical planning consideration when evacuations have been conducted.



Repopulation

- Planning for repopulation should begin shortly after evacuations are initiated
- Responsibility for this function belongs to the Liaison Officer or Law Enforcement Liaison if assigned, or the Incident Commander or his designee if no Liaison Officer is assigned.
- The SDFD / SDPD Evacuation and Repopulation Plan documents should be used to document the plan for repopulating evacuated areas.



Repopulation

- Repopulation criteria shall take into account emergency worker safety and the community needs.



Repopulation

- Control of repopulation to an evacuated area shall be accomplished during planning meetings with command and general staff, and coordinated with media releases and incident action plan instructions. Local residents may be allowed to repopulate with escorts or while mop-up operations and infrastructure repair continue if the situation allows.



Repopulation

- Coordination with assisting and cooperating agencies is critical to the success of repopulation planning. Ultimately it is a law enforcement decision based on fire department input to approve repopulation of citizens back into an area previously closed or evacuated.



Public Safety Map Book and Grid

- Region-wide common map grid for communicating a geographical area for mass notification and evacuation
- Reduce potential for miscommunicating evacuation area
- Supports situational awareness mapping tools
- Supports public information in SDEmergency Map
- Supports Alert San Diego – mass notification system



Tools

- Web map application
- PDF Mobile
- PDF Print
- SDGE Mapbook
- Wide area paper maps
- Other map viewers
 - Intterra
 - SCOUT
 - Law Dashboard
 - Tablet Command



Web Map Application – Page level

Public Safety Map Book & Grid a project of the Regional Public Safety Geodatabase

Search Address or Location Here

Public Safety Mapbook Page: 195

PDF File

QR Code:

Zoom to

SanGIS, Bureau of Land Management, Esri



Web Map – Grid level

Public Safety Map Book & Grid a project of the Regional Public Safety Geodatabase

Search Address or Location Here

Public Safety Grid:3032

PDF File

QR Code:

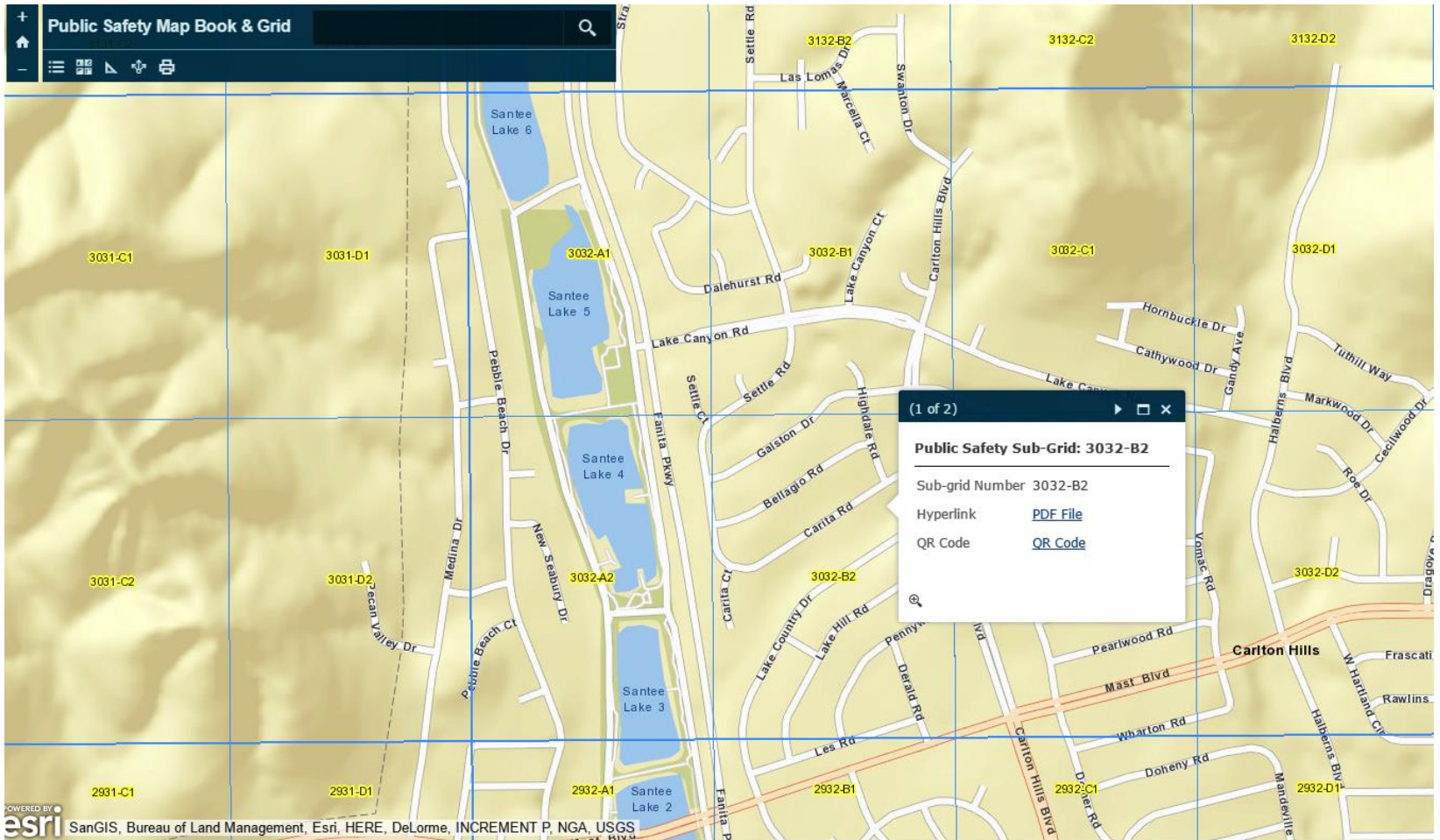
Zoom to

32.854 -116.992 Degrees

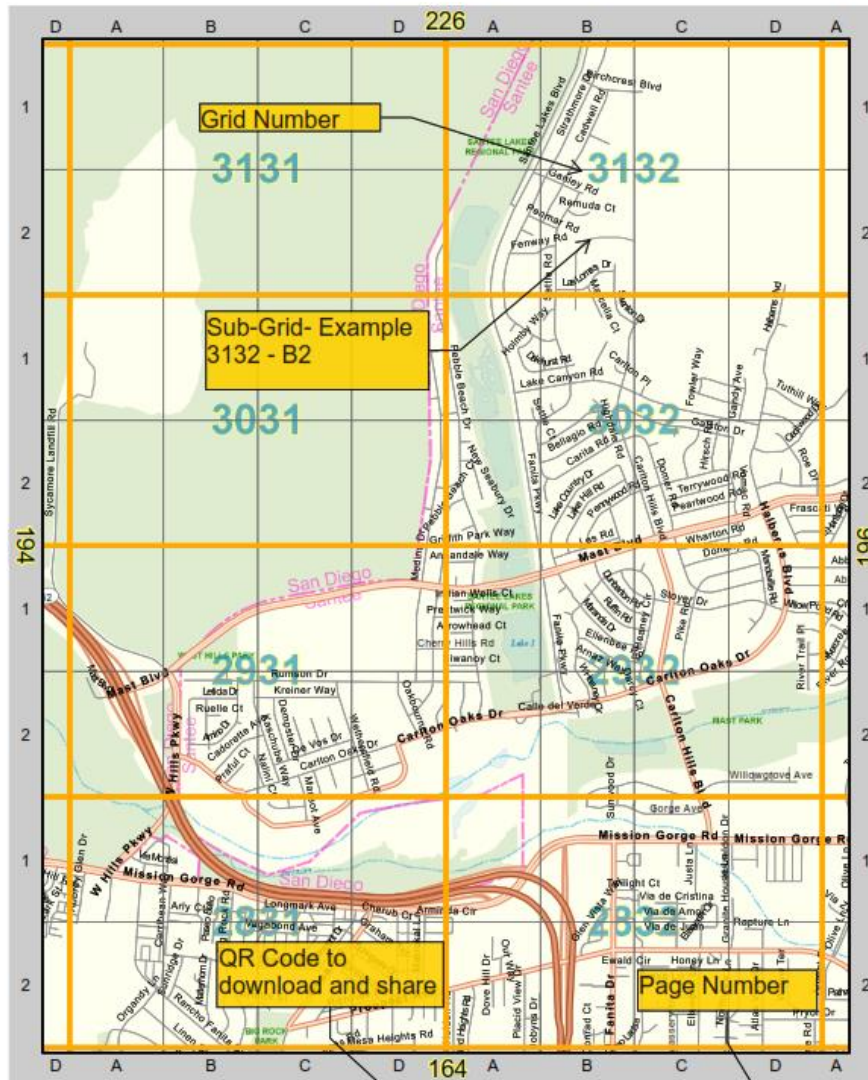
SanGIS Bureau of Land Management, Eric HERP, Delores



Web Map – Sub-grid level



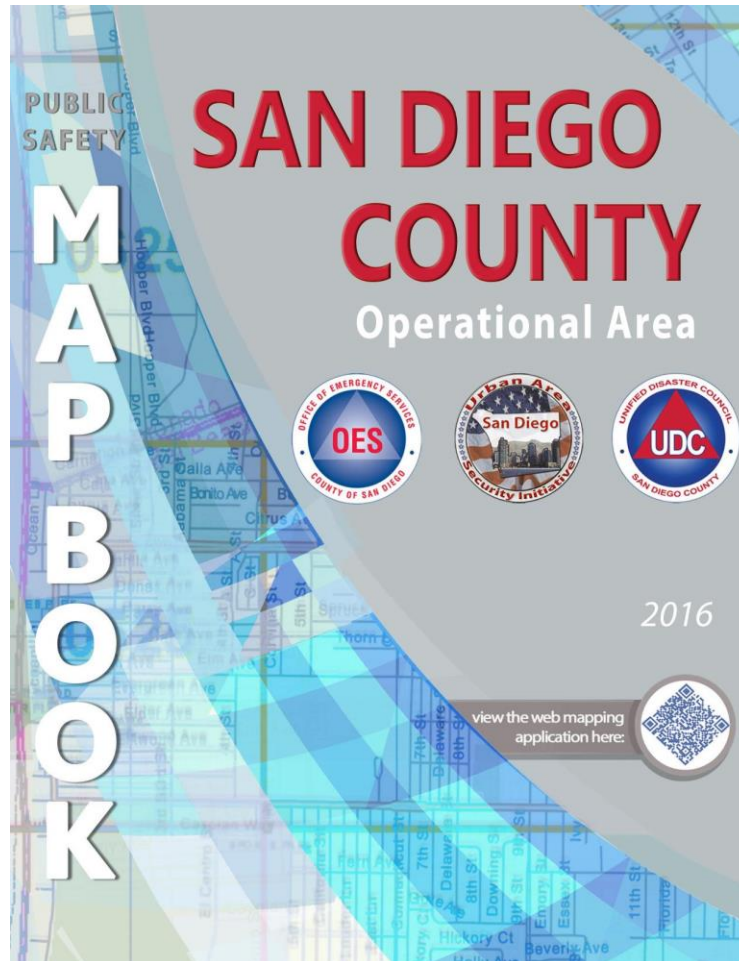
Map page



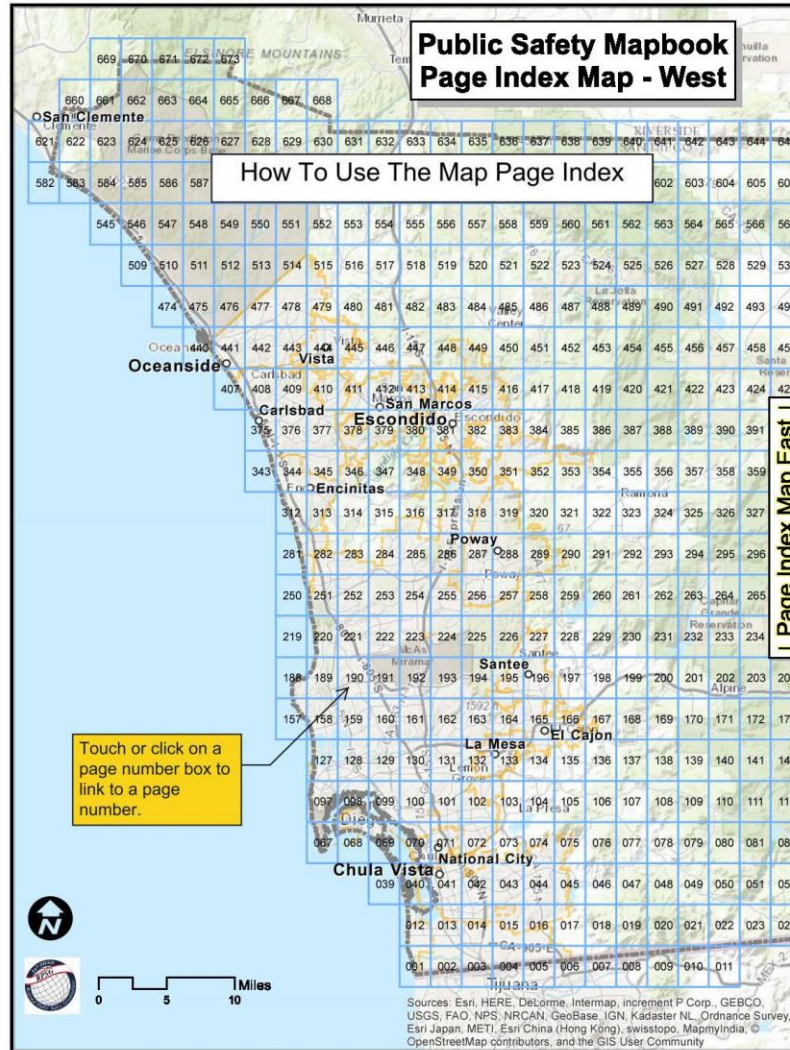
0 0.25 0.5 Miles



PDF for Mobile



Navigate to a page



Navigate PDF

How To Navigate Map Pages

Touch or Click here to go to this page

Touch or Click here to go to this page

Touch or Click here to go to this page

Touch or Click here to go to this page

Touch or Click here to return to index page

Return to Index

0 0.25 0.5 Miles

226 194 164

